



RENAULT

RENAULT ZOE 50

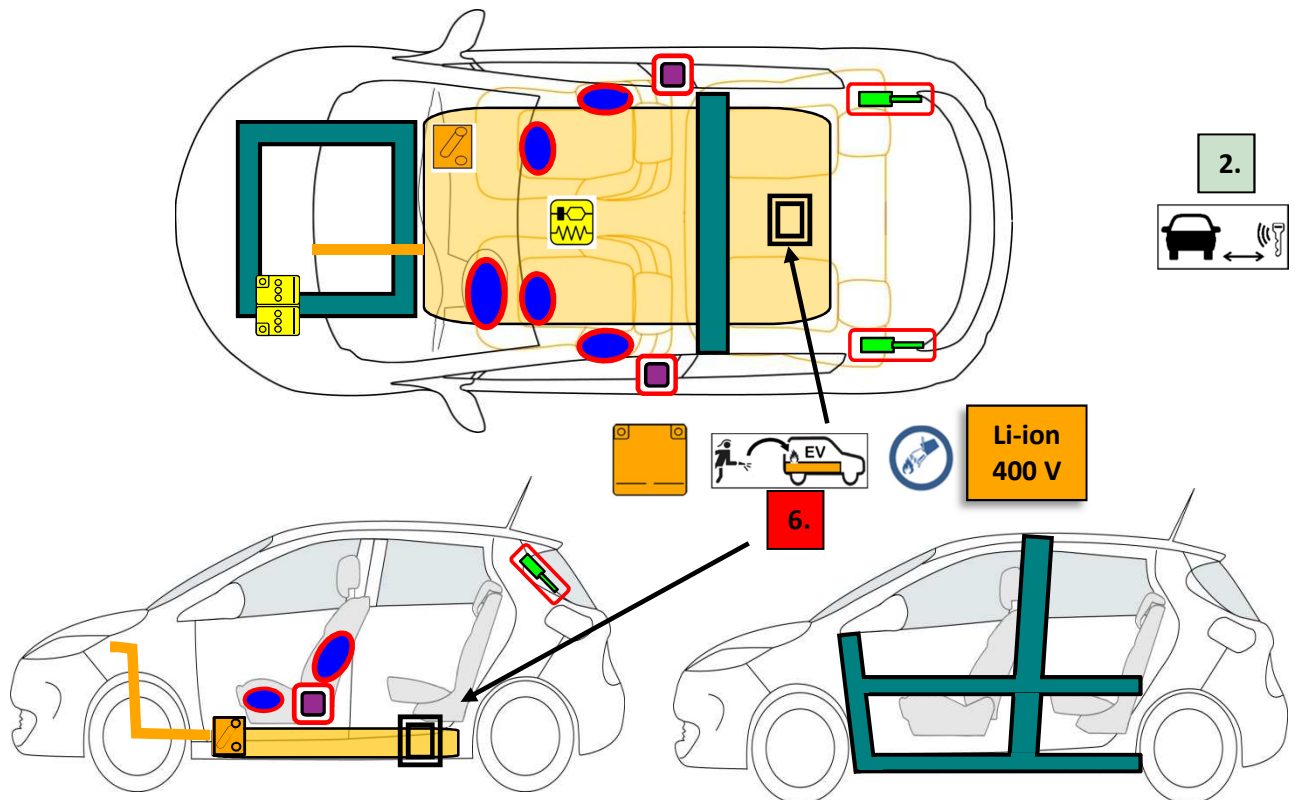
(2019 -)



In consultation with



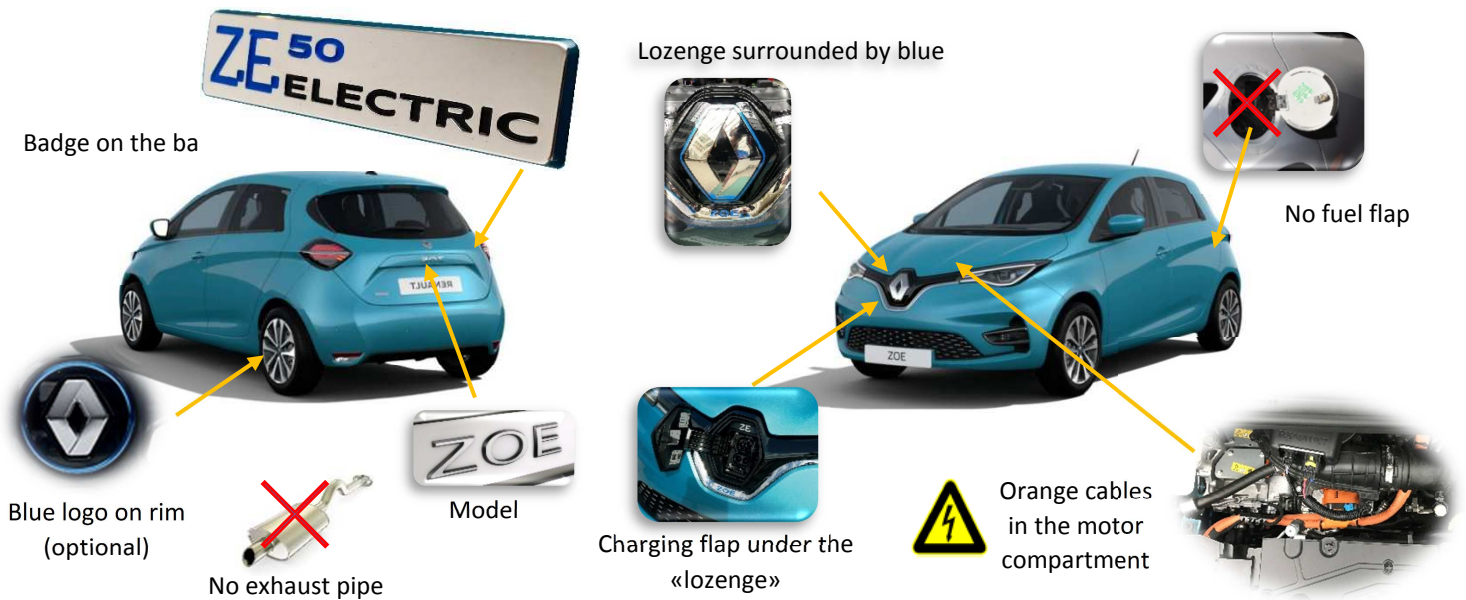
MINISTÈRE DE L'INTÉRIEUR



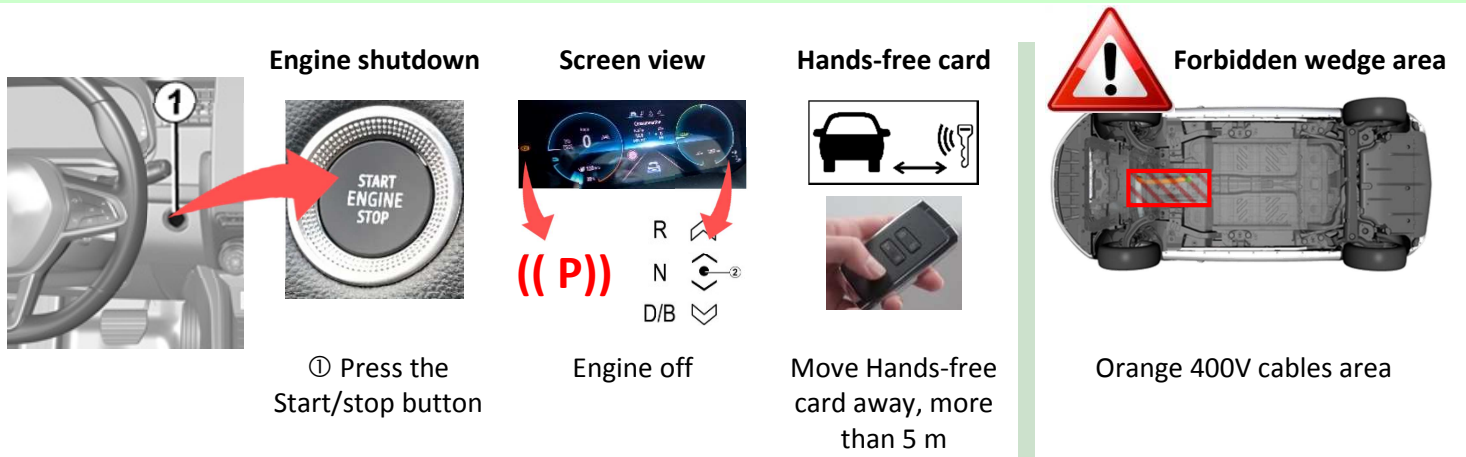
	Airbag		Stored gas inflator		Seat belt pretensioner		SRS control unit		Pedestrian protection active system
	Automatic rollover protection system		Gas strut / Preloaded spring		High strength zone		Zone requiring special attention		
	Battery low voltage		Ultra-capacitor, low-voltage		Fuel tank		Gas tank		Safety valve
	Battery pack, high-voltage		High voltage power cable		High voltage component		Fuse box disabling high voltage		High voltage ultra-capacitor

Brand	Modele	Phase	Year of launch	Internal reference	Creation date	Update date	Version	Page
RENAULT	ZOE 50	1	2019	RSE-FAD-B10-2019-2	18/02/2020	21/08/2020	2	1 / 4

1. Identification / recognition

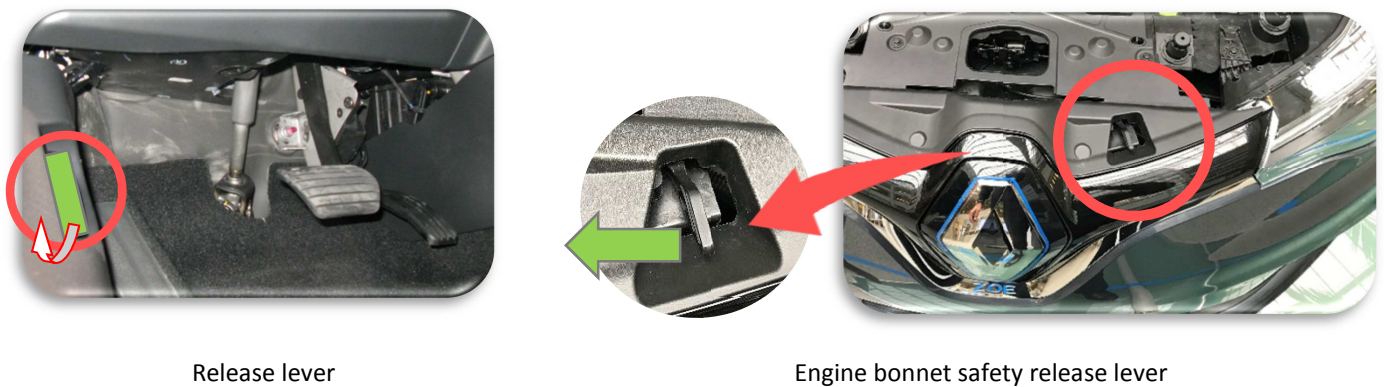


2. Immobilisation / stabilisation / lifting



3. Disable direct hazards / safety regulations

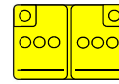
ENGINE BONNET CATCH ACCESS



Brand	Modele	Phase	Year of launch	Internal reference	Creation date	Update date	Version	Page
RENAULT	ZOE 50	1	2019	RSE-FAD-B10-2019-2	18/02/2020	21/08/2020	2	2 / 4

12 Volts Battery

Engine compartment

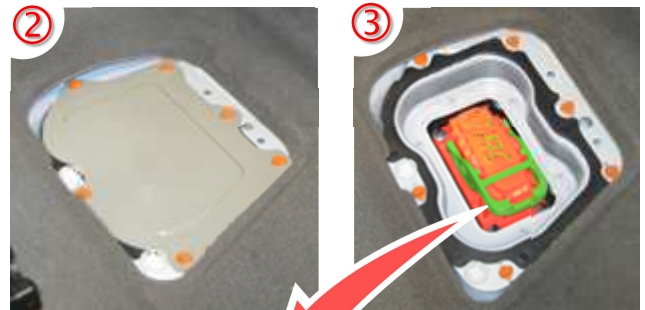


- 1- Switch off the ignition
- 2- Disconnect the negative terminal (-)

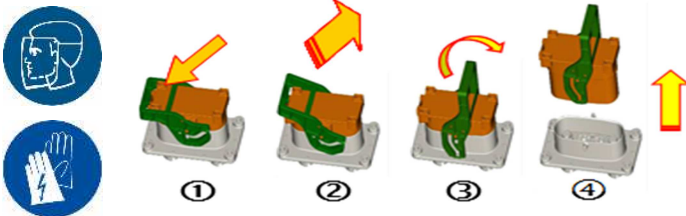
400 Volts battery

Only if cutting operation is necessary :

Disconnection of the 400 Volts battery by removing the service plug.




- 1 Remove the «carpet» cover
- 2 Pulling off the metal plate with a hose spanner or other tool
- 3 Disconnect the Service plug



- 1 & 2 Press the orange release tab while lifting the green lever
- 3 & 4 Pull the lever to remove the service plug

5. Stored energy / liquids / gases / solids

	Lithium-ion	52,2 kW.h	400 V
---	-------------	-----------	-------

Brand	Modele	Phase	Year of launch	Internal reference	Creation date	Update date	Version	Page
RENAULT	ZOE 50	1	2019	RSE-FAD-B10-2019-2	18/02/2020	21/08/2020	2	3 / 4

6. In case of fire

Extinguishing a traction battery fire propagation

Li-ion

Fireman access under the back seat

If traction battery on fire : → Water extinguishing by filling

Tailgate gas struts



Risk of missile effect of tailgate gas struts

7. In case of submersion



The occupants can be helped, including if the vehicle is still in the water.



By precaution, during an intervention on a totally or partially immersed electrical vehicle, and in a general way in wet environment, don't touch directly 400V orange cables, 400V components, traction battery.

The 400V disconnection of the electrical vehicle is possible only after having removed the vehicle of the water.

10. Explanation of pictograms used

Electric Vehicle		Remove smart key			
Electrical protection gloves 	Electrical protection gloves 	Breathing apparatus (BA) 	Use thermal Infrared camera 	Use water to extinguish the fire 	Special battery access
Don't brake, nor open 		Flammable 	Dangerous voltage 		

Brand	Modele	Phase	Year of launch	Internal reference	Creation date	Update date	Version	Page
RENAULT	ZOE 50	1	2019	RSE-FAD-B10-2019-2	18/02/2020	21/08/2020	2	4 / 4