



**RENAULT**  
Passion for life

# Renault CLIO



January 2021

**5** YEAR  
WARRANTY  
100,000 MILES



## Seductive style

Sensual lines, dynamic profile, sculpted sides and assertive presence. From the first look, CLIO attracts you with its dynamic and desirable style. With its tidy finishes, it combines modernity and robustness: C-shaped signature, full LED lighting, finely integrated chrome finishes, brilliantly showcased in the optional new signature Valencia Orange metallic colour.







Image includes optional TECHNO pack on R.S.Line



## A perfect smart cockpit

On the interior, every detail counts. CLIO has undergone a revolution, offering quality materials and finishes. With its new high-tech, driver-orientated cockpit, its sporty seats and the MULTI-SENSE<sup>†</sup> customisable ambient lighting, enjoy a driving experience which will awake your senses. Settle in to the future at the wheel of CLIO, and stay ahead: large multimedia 9.3" touchscreen\*, customisable driver screen and electric handbrake<sup>†</sup>!

\* Standard on S Edition and R.S. Line.

† Available as an option in the TECHNO pack on R.S.Line



Image includes optional TECHNO pack on R.S.Line





## Driving pleasure and comfort on board

The CLIO offers a large choice of engines. With the new TCe 130 engine\* featuring the automatic EDC transmission with steering wheel paddles, CLIO has top-level performances whilst ensuring impressive fuel consumption.

Thanks to its dynamic chassis, and its direct and precise steering, no more boring roads!

The driver will not be the only one smiling on board: the suspension and soundproofing have been improved for everyone's comfort.

Finally, the Bose® audio system† with its 9 speakers offers a rich and immersive musical experience.

\* Available on S Edition / R.S.Line

† Optional on Iconic / S Edition / R.S.Line



Image includes optional TECHNO pack on R.S.Line



## Renault CLIO R.S. Line: stand out through sportiness!

CLIO R.S. Line stands out with its sportiness, which it gets from its Renault Sport DNA. The exterior design sets the tone: sporty front bumper with F1 blade emblematic of R.S. Models, bee hive lower grille, Glossy Black insert on grille, 17 inch R.S. Line diamond-cut wheels, rear underskirt with spoiler and oval chrome exhaust finisher. This unique personality is summed up by the R.S. Line badge on the front wings and boot door.

The cockpit confirms this sporty character with a carbon look enhanced by red contrast stitching: sport seats with strengthened side supports, perforated leather sport steering wheel with double diamond, aluminium pedal unit, dashboard and seat belts with a striking red line. The black ceiling and the driver-focused high-tech cockpit complete this resolutely sporty and technological atmosphere. Passion stimulated by every detail.







Smart Cockpit,  
technology at  
your fingertips





## Stay connected... in total freedom!

At the heart of the cockpit, the EASY LINK system\* offers the largest screen in its category, and is totally customisable. Perfectly integrated with the Renault EASY CONNECT universe, it all starts before you have even stepped inside. Thanks to the MY Renault smartphone application, sends destination to your car.

Once on board, the EASY LINK system, compatible with Android Auto™† or Apple™ CarPlay™†, gives you access to all your multimedia content in the blink of an eye.

The onboard navigation delivers a huge amount of information in real time: traffic density, to incidents or service stations on your journey.

As simple and effective as Google Maps: the Google address search! All you need is two or three key words to search your destination, you do not have to know the exact address.

Thanks to the Auto-Update function, you can be sure that your system and TomTom mapping are automatically updated.

Finally, with the wireless smartphone charger\*\*†, you can easily stay connected to your online world.

Android Auto™ is a trademark of Google Inc. Apple CarPlay is a trademark of Apple Inc.

\* Standard on Iconic / S Edition / R.S.Line \*\* Available as part of an option pack on R.S.Line

† For compatible devices, please refer to <https://www.renault.co.uk/services/multimedia/bluetooth-compatibility.html>  
Connecting a mobile phone to use Bluetooth® should only be done when the car is parked safely. Use of the system should always be in accordance with the rules of The Highway Code. Drivers should only use the system when it is safe to do so. Drivers should be aware of the potential for hands-free technology to distract attention from the road, which could impact on having full control of the vehicle.



Not UK Specification



E-TECH Launch Edition Hybrid

## All-New CLIO E-TECH Hybrid

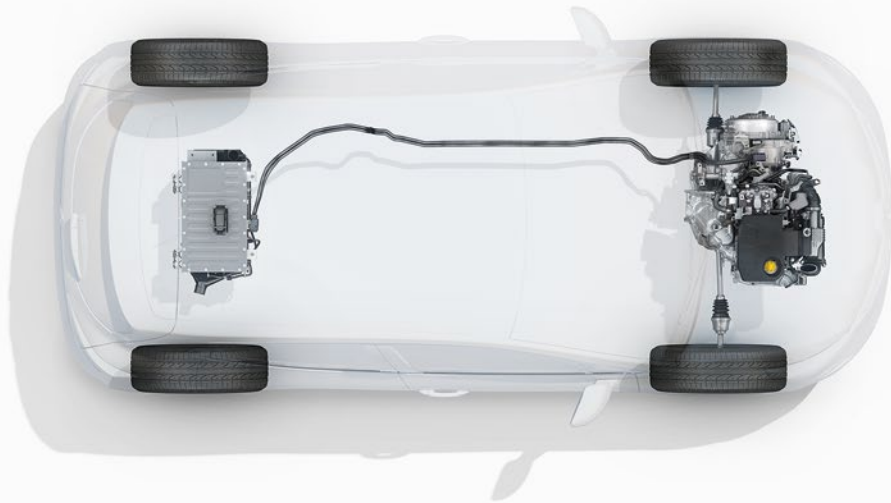
With its new hybrid engine, All-New CLIO E-TECH Hybrid offers you unprecedented driving pleasure. It combines acceleration, responsiveness and fuel economy of the E-TECH Hybrid technology keeping the versatility and comfort of the All-New CLIO. In town you can experience all-electric driving, synonymous with silence and fuel savings. On the road, thanks to its power of 140 hp, All-New CLIO E-TECH hybrid brings confident acceleration and the pleasure of its instant responsiveness. E-TECH Hybrid is available on all trim levels.

**E-TECH**



Image shown is the E-TECH Launch Edition Hybrid





E-TECH Launch Edition Hybrid

## The All-New CLIO E-TECH and more

On board, find all the advantages of All-New CLIO, the benchmark in its category: large connected screens, maximum safety and ultra-modern driving aids.

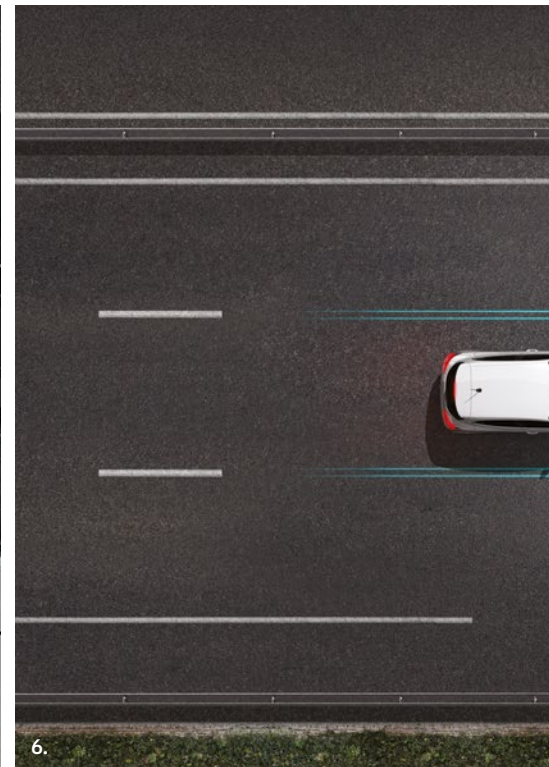
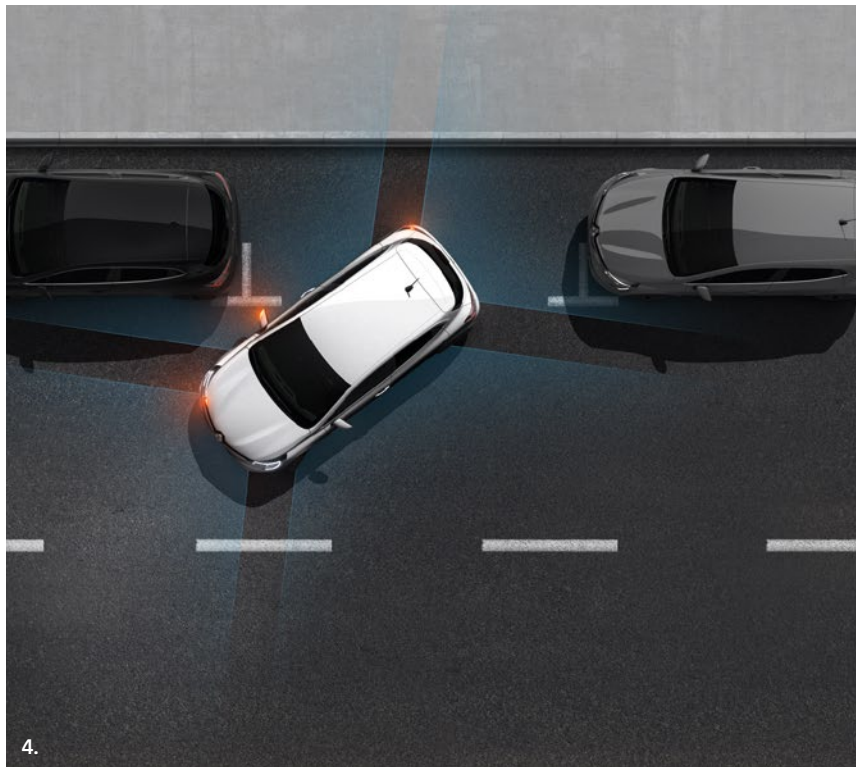
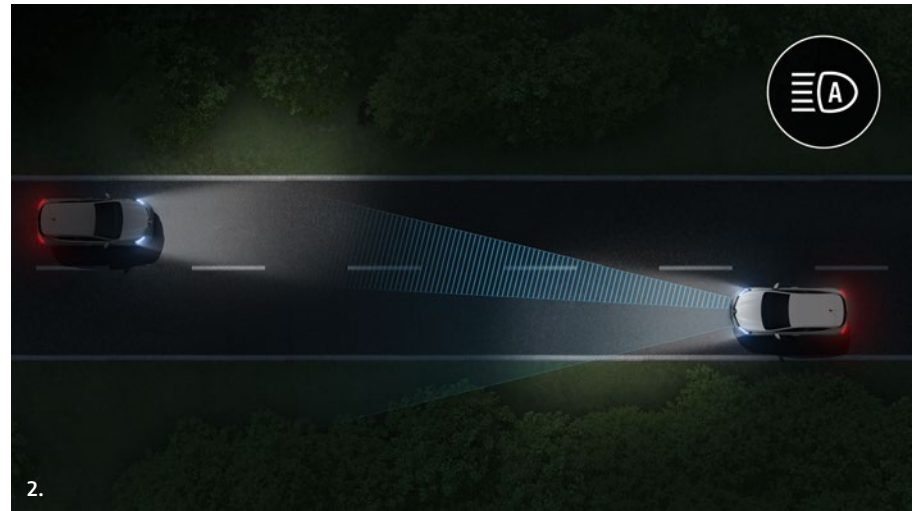
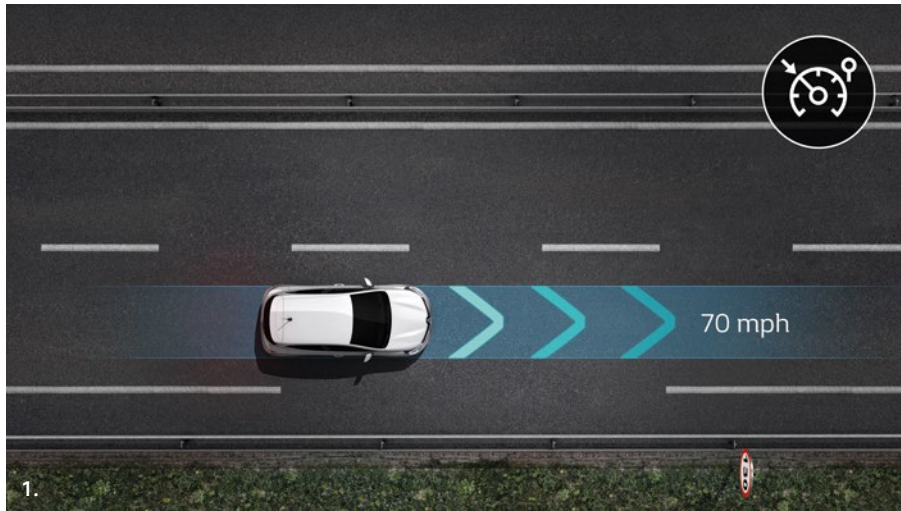
With the benefits of E-TECH Hybrid technology: comfort of the E-TECH automatic transmission, EV button for 100% electric driving, customisation of the MULTI - SENSE driving modes.

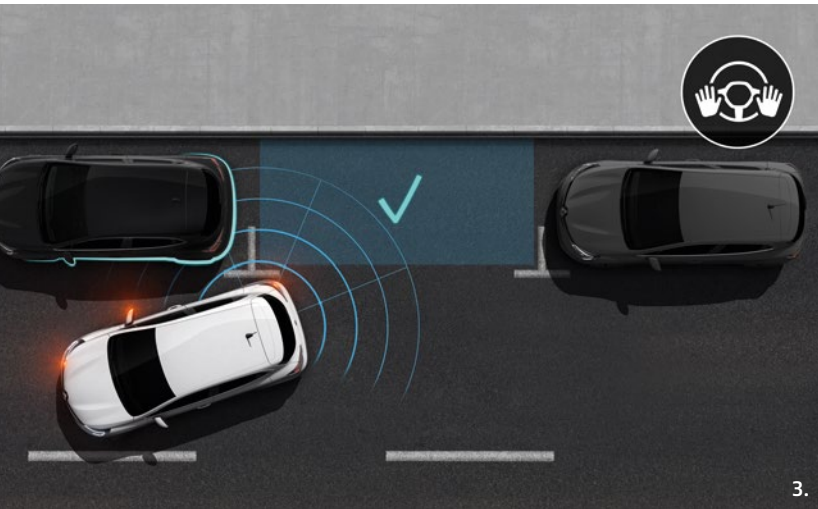
**E-TECH**



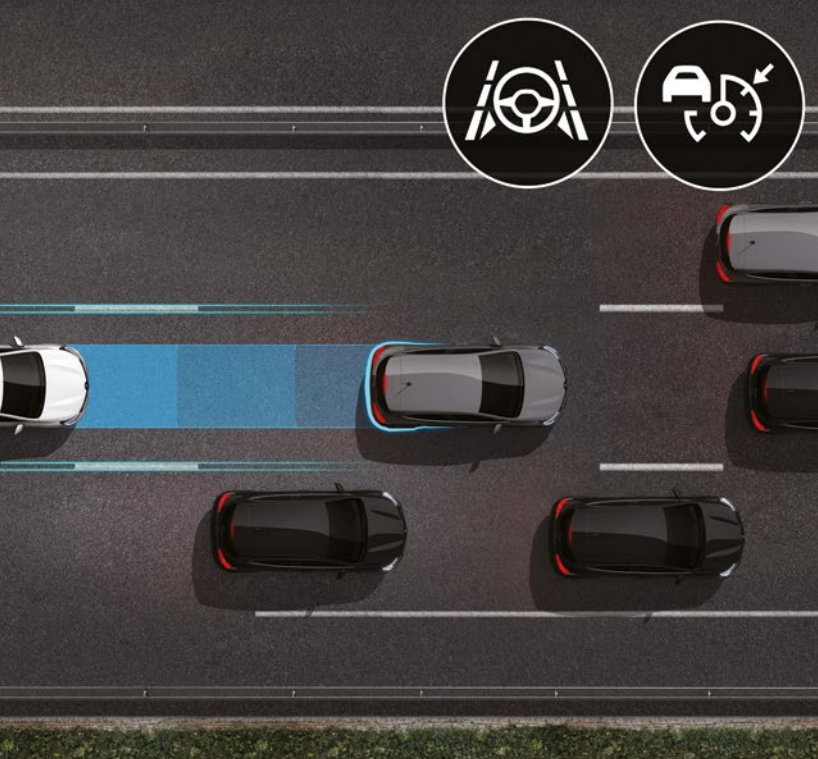


E-TECH Launch Edition Hybrid





3.



## Renault EASY DRIVE

The innovative technologies on board CLIO are with you every second for a simplified drive.

### 1. Cruise Control / Speed Limiter

Set your speed or your maximum speed. Steering wheel controls allow you to set parameters in a few instants.

### 2. Renault LED Pure Vision

CLIO is equipped with powerful Full LED Pure Vision headlights across the range. As well as automatic main beam headlight activation\*\* for better visibility.

### 3. Hands-Free Parking\*

Let your CLIO carry out a perfect parallel parking manoeuvre in the blink of an eye using the Easy Park Assist hands-free parking function. Parallel, perpendicular, angle... no space is too difficult for CLIO!

### 4. 5. 360° Camera\*

CLIO is equipped with 4 cameras whose images reconstitute the vehicle's 360° direct environment. Execute your manoeuvres effortlessly and protect the irresistible style of CLIO!

### 6. Traffic Jam Companion\*

A unique innovation in the segment, CLIO is capable of staying at the centre of its lane and managing its speed in line with the traffic until it comes to a complete standstill. This assistant gives you more peace of mind in your motorway journeys or in the event of dense traffic.

\* Optional on R.S. Line as part of a pack

\*\* Standard on S Edition and R.S.Line

## On-board intelligence

CLIO has the most modern technologies, providing you with optimal safety.

### 1. Active Emergency Brake<sup>†</sup>

You can trust CLIO. It constantly keeps an eye on traffic and associated risks. Sudden braking, a pedestrian crossing... the application alerts you and can even automatically activate emergency braking under certain conditions.

### 2. Lane Keeping Assist<sup>†</sup>

Prevention is the best kind of safety. That is why CLIO offers, as standard, systems to warn you when you leave your lane and active assistance to stay in it.

### 3. Traffic Sign Recognition<sup>†</sup>

CLIO informs you via the dashboard of speed limits using a camera which recognises road signs.

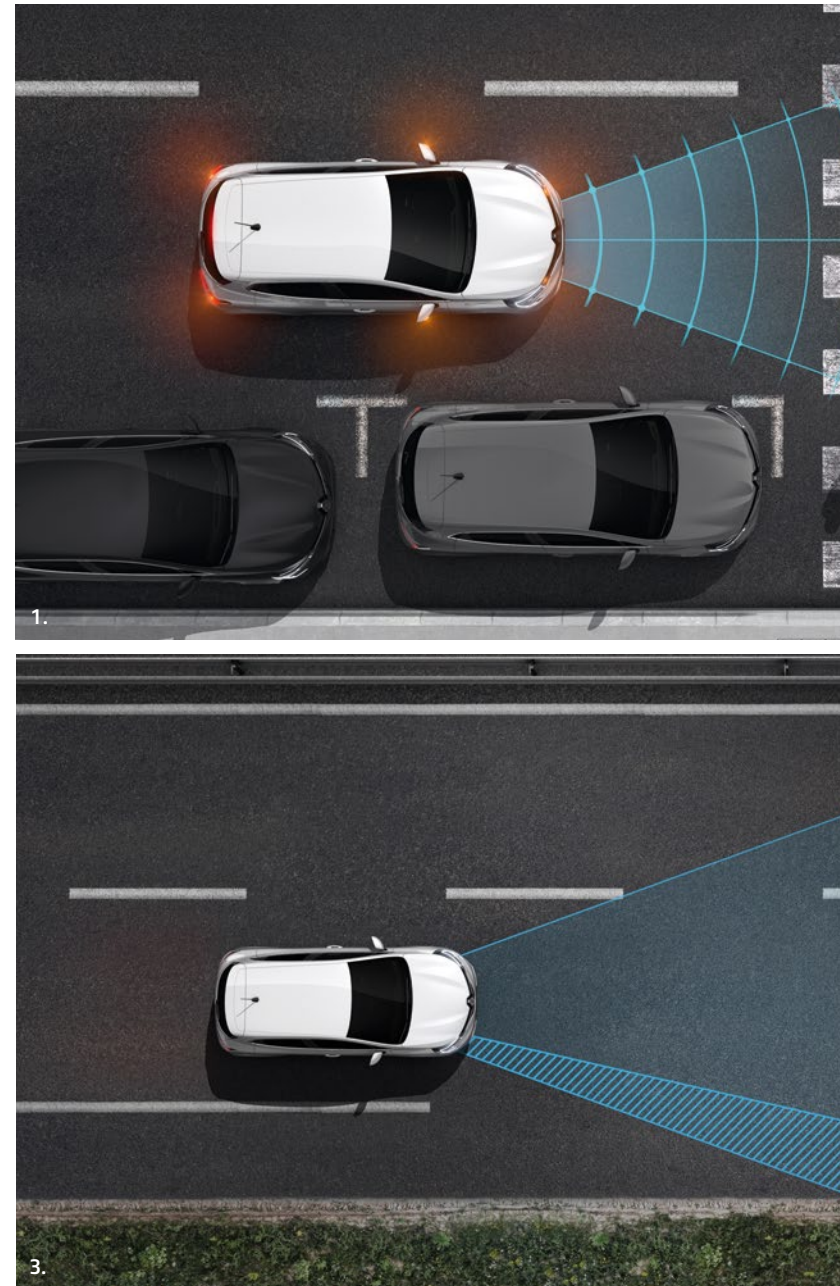
### 4. Blind Spot Warning<sup>\*†</sup>

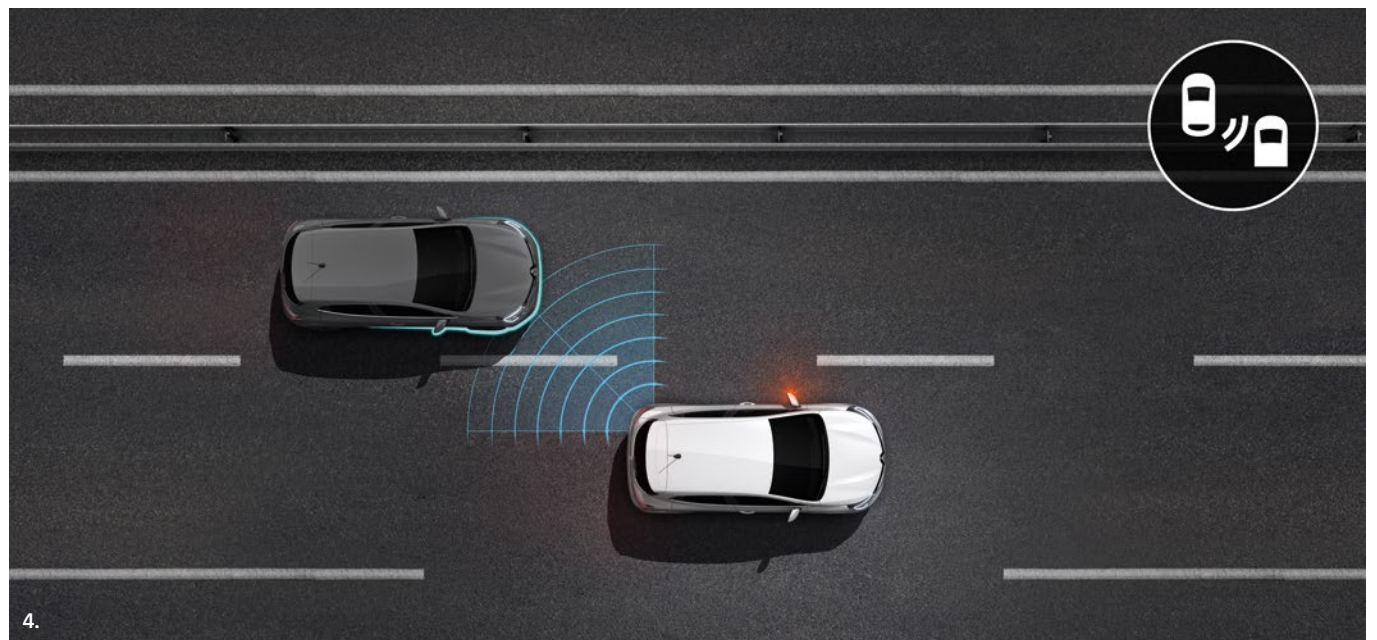
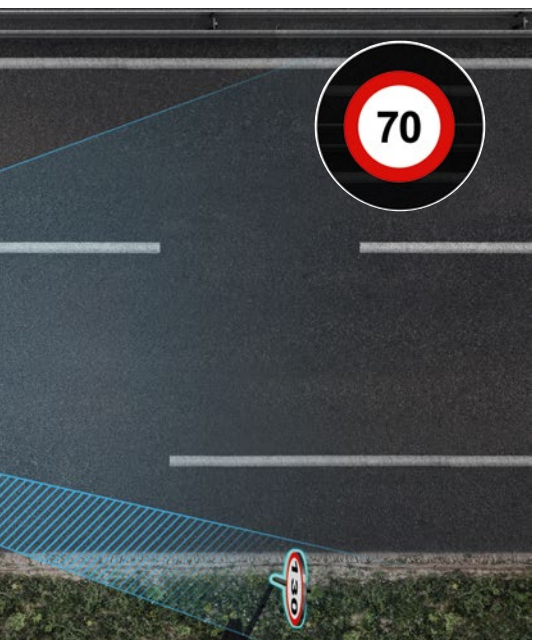
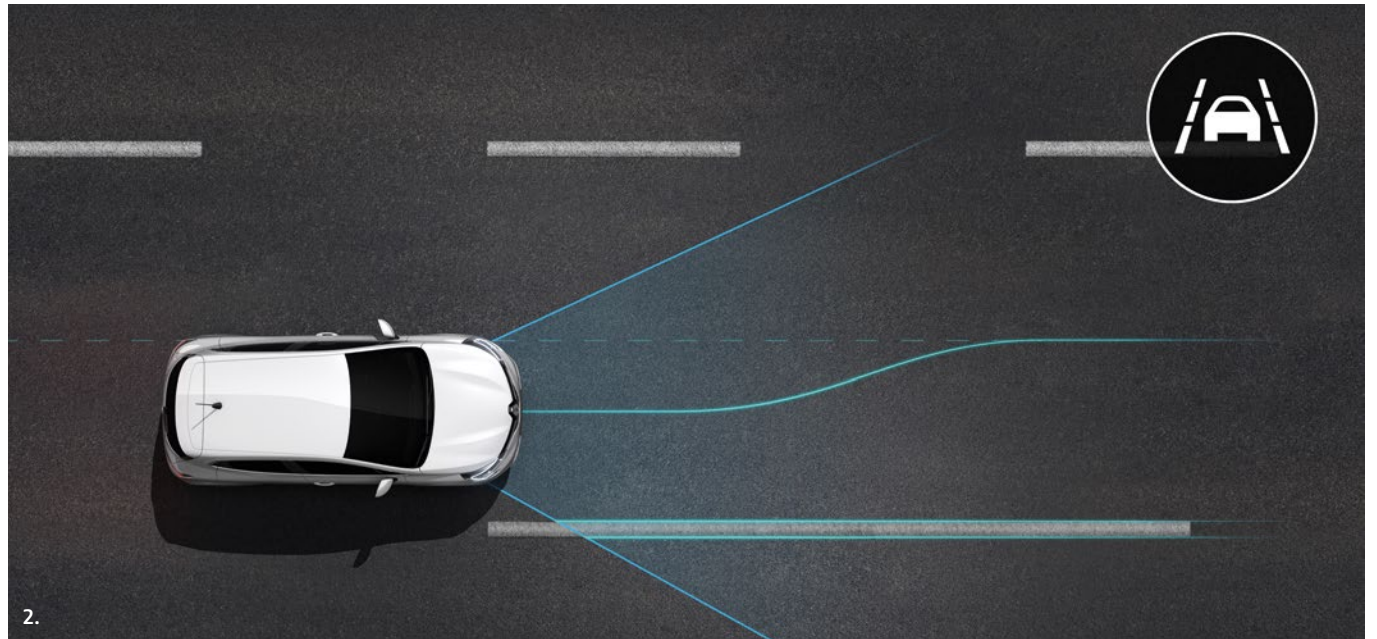
CLIO detects the presence of any vehicle in or approaching your blind spot, and alerts you with a light signal in the door mirrors.

\* Available in an option pack on R.S. Line

† It is your responsibility to stay alert, drive safely and be in control of the vehicle at all times. Driver assist features have speed and other limitations and should not be relied on.

For more information, please refer to the owner's manual or contact your local dealer.









E-TECH Launch Edition Hybrid

# Colours

---



Glacier White



Mercury



Titanium Grey



Urban Grey



Diamond Black



Valencia Orange





Flame Red



Iron Blue



Celadon Blue



Quartz White

	Glacier White (369)	Mercury (D69)	Titanium Grey (KPN)	Urban Grey (KPW)	Diamond Black (GNE)	Valencia Orange (EQB)	Flame Red (NNP)	Iron Blue (RQH)	Celadon Blue (RQT)	Quartz White (QNY) <sup>A</sup>
Play	FOC	○	○	○	○	○	○	○	○	○
Iconic	FOC	○	○	○	○	○	○	○	○	○
S Edition	FOC	○	○	○	○	○	○	○	○	○
R.S. Line	FOC	○	○	○	○	○	○	○	○	○
E-TECH Launch Edition Hybrid	FOC	-	-	○	○	-	-	-	-	○

FOC = free of charge ○ = Optional - = Not available

Every effort has been made to ensure that the information, descriptions, and images were correct at the time of publication however images may not always reflect the exact version selected. It should be noted that limitations on screen do not permit the subtle paintwork shades on this page to be shown with absolute accuracy.

# Standard features

## PLAY



16" Amicitia flex wheels



Black cloth upholstery with headrest and sides



### Exterior

- 16" Amicitia Flex wheels
- Front bumper grille in glossy black
- LED daytime running lights
- Headlights, Renault LED Pure vision
- Body-coloured door handles and mirror shells

### Interior

- Glossy Black trim on steering wheel and gear shift lever surround
- Black cloth upholstery with headrest and sides
- Black lined door armrests
- COMFORT front seats with reinforced side support

### Safety

- 6 airbags, including side curtain airbags
- Isofix (i-Size), front passenger & rear side
- Hill Start Assist (HSA)
- Active emergency braking with pedestrian and cyclist detection
- Lane Keeping Assist and Lane Departure Warning
- Traffic sign recognition
- Cruise control and speed limiter

### Comfort and Convenience

- Height-adjustable driver's seat
- Manual air conditioning
- Electrically adjustable, folding and heated door mirrors
- One-touch electric front windows
- Automatic headlights
- Height- and depth-adjustable multi-function steering wheel
- 60:40 folding rear seat
- Integrated double microphone for telephony
- Renault EASY CONNECT: and services
- Renault Automatic Emergency Assist (112)
- 4.2" TFT driver information display
- Radio with integrated display, DAB, 2x20W amplifier, 1x USB in facia / Bluetooth, Smartphone Voice Recognition R&Go

### E-TECH Standard Equipment

- 7" TFT Drivers information display
- EV Mode selector

# Standard features

---

## ICONIC (additional equipment to Play)



16" Philia Diamond Cut Alloy with Black inserts



Black cloth upholstery with headrest and sides



### Exterior

- 16" Diamond cut Philia alloy wheels
- Front LED fog lights
- Extra tinted rear windows

### Interior

- Chrome trim on steering wheel, gear lever surround and side vents
- Leather steering wheel

### Comfort and Convenience

- Renault EASY CONNECT: multimedia and services
- Rear parking sensors
- Hands free key card
- Renault EASYLINK multimedia system including 7" touchscreen with navigation FM/AM/DAB, Bluetooth and embedded Nav with 3 year update, smartphone integration plus: Apple CarPlay™ and Android Auto™

# Standard features

---

## **S EDITION** (additional equipment to Iconic)



Black 3D fabric and velvet upholstery



17" Viva Stella Diamond Cut Alloy with Grey inserts



### **Exterior**

- 17" Viva Stella Diamond Cut Alloy with Grey inserts

### **Interior**

- Vision grey interior detail
- Black 3D fabric and velvet upholstery

### **Comfort and Convenience**

- Climate control - Air Conditioning
- Rear Electric windows
- Easy Link Navigation: 9.3" touchscreen + 4x20W amplifier + FM DAB double tuner, sound auditorium, 2xUSB, 1xJack/Bluetooth, smartphone integration plus: Apple CarPlay™ / Android Auto™
- 7" Driver information display
- Front parking sensors and Rear View Camera
- Automatic wipers

# Standard features

## R.S. LINE (additional equipment to S Edition)



17" R.S. Line Diamond Cut Alloy with Black inserts



R.S. Line black and red striped fabric upholstery



Image includes optional TECHNO pack on R.S.Line

### Exterior

- 17" R.S. Line Diamond Cut alloy with Grey inserts
- Specific front bumper with F1 blade painted Gun Metal Grey and bee hive lower grille
- Chrome badges on front wings and boot lid, with R.S. Line signature
- Gun Metal Grey lower door protectors
- Gun Metal Grey rear spoiler
- Oval chrome exhaust finisher

### Interior

- Leather steering wheel, with perforated leather, R.S. signature, grey and red contrast stitching
- Leather gear lever and hand brake with grey and red contrast stitching
- Sporty aluminium pedal set
- Black seat belts with red border
- Dark Interior Roof Lining
- Horizontal dashboard display, lined with soft material with Carbon motif
- Front and rear door inserts in soft Carbon materials
- Black front and rear door armrests with grey and red contrast stitching
- R.S. Line Red on the air vent
- R.S. Line upholstery, black / red striped fabric, red contrast stitching

# Standard features

---

## E-TECH LAUNCH EDITION HYBRID



17" Viva Stella Diamond cut alloy with Black inserts



Grey fabric upholstery with blue stitching



### Exterior

- Shark fin antenna
- Blue exterior colour pack
- Black door mirrors"

### Interior

- Grey fabric upholstery with blue stitching
- Vision Grey interior detail
- Blue Interior colour pack

### Comfort and Convenience

- Electronic parking brake with Auto hold
- Central Armrest with Auto hold



# Interior customisations



Image shown is the E-TECH Launch Edition Hybrid



Image has the optional orange interior colour pack

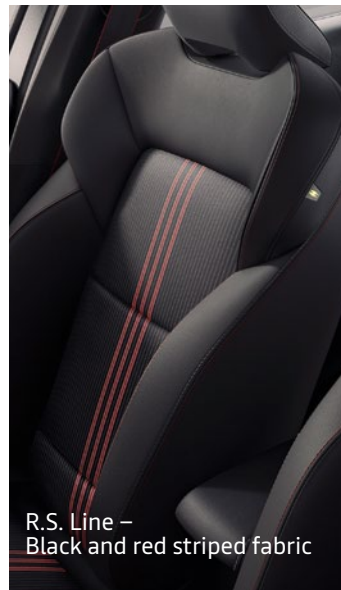
# Upholstery customisations



Play and Iconic – Black cloth upholstery with headrest and sides



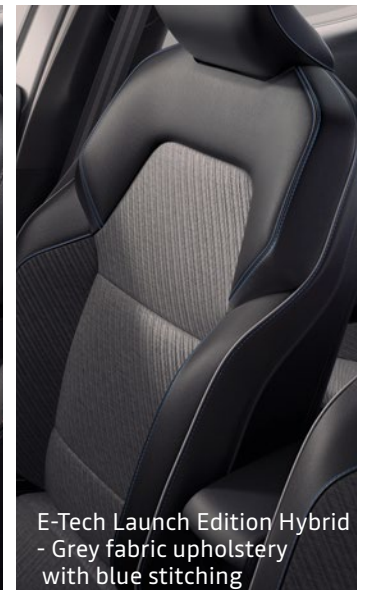
S Edition – Black 3D fabric and velvet



R.S. Line – Black and red striped fabric



Optional R.S. Line – Leather, black with red contrast stitching\*



E-Tech Launch Edition Hybrid - Grey fabric upholstery with blue stitching

\*Genuine leather on front facing surface



# Wheel Trims



16" Amicitia flex wheels



17" Viva Stella Diamond Cut Alloy with Black inserts



17" Viva Stella Diamond Cut Alloy with Grey inserts



16" Philia Diamond Cut Alloy with Black inserts



17" R.S.Line Diamond Cut Alloy with Black inserts

	16" Amicitia flex wheel	16" Philia Diamond Cut Alloy with Black inserts	17" Viva Stella Diamond Cut Alloy with Black inserts	17" Viva Stella Diamond Cut Alloy with Grey inserts	17" R.S. Line Diamond Cut Alloy with Black inserts
Play	●	-	-	-	-
Iconic	-	●	○	○	-
S Edition	-	-	○	●	-
R.S. Line	-	-	-	-	●
E-Tech Launch Edition Hybrid	-	-	●	-	-

● = Standard (therefore no cost) ○ = Optional - = Not available

# Exterior customisations

---

**Orange Exterior  
Colour Pack**





Orange radiator grille strip\*



Orange centre wheel cap\*



Orange strip on lower door protection\*



Orange strip on rear end panel\*

\*Restrictions apply by exterior body colour. Please consult your dealer for further information

# Accessories

Experience your CLIO to the max with our range of accessories.

**1. Underbody Welcome Light\***. Don't get lost again in a poorly lit car park. CLIO lights up automatically when you either approach it or simply press a button on your key.

**2. Shark Antenna\***. Add a sporty touch with the Shark Antenna, perfectly integrated in to the shape of your CLIO. Compatible with digital audio broadcasts (DAB).

**3. Easy Flex All-in-one Boot Liner**. Essential for protecting the boot of your CLIO and transporting larger objects. Folds and unfolds easily, adapting to the rear seat position. When fully extended, it covers the whole load space. Multi-purpose and practical for both everyday use and also leisure activities.

**4. Kenwood Dashcam**. For your safety, the on-board camera automatically starts recording as soon as the vehicle ignition is switched on.

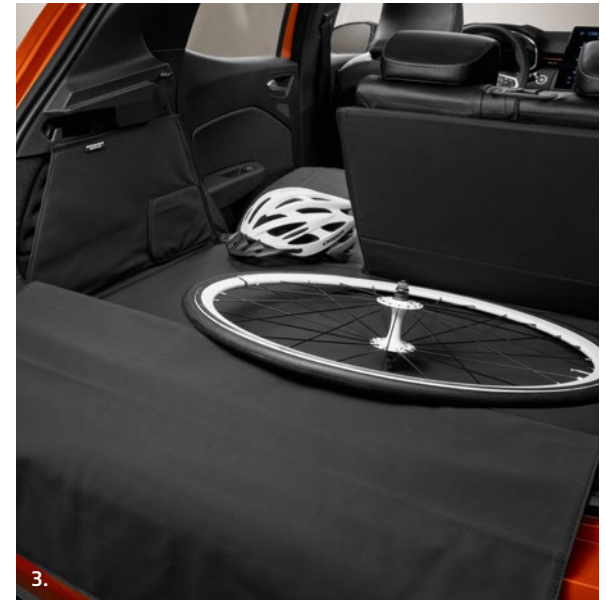
**5. Illuminated Door Sills\*\***. An elegant and modern touch every time you open the doors of your CLIO. Finished with the CLIO logo, these stainless steel and aluminium finished door sills also protect your vehicle's doors from damage.

\*These accessories require registration of the vehicle before fitment.

\*\*Also available in a non-illuminated version.

Accessories are fitted post-production, and may have an impact on real world fuel (actual) consumption and CO<sub>2</sub> figures.

For more information and additional accessories, consult the CLIO accessories brochure. For prices, please refer to Renault Car Price Guide







	Play	Iconic	S Edition	R.S. Line	E-TECH Launch Edition Hybrid
<b>COMFORT AND CONVENIENCE</b>					
Manual air conditioning	●	●	-	-	-
Automatic climate control	-	*	●	●	●
Storage Pack : central armrest with storage and electronic parking brake with auto hold	-	-	-	○	○
Comfort Pack : Rear electric windows, armrest with storage, interior vanity mirror with lighting	-	○	-	-	-
Convenience Pack : Automatic headlights and automatic front wipers, automatic climate control air conditioning and LED front reading light	-	○	-	-	-
Driver's seat height adjustment	●	●	●	●	●
Passanger's seat height adjustment	-	-	-	*	●
Center console with armrest	-	-	-	*	●
Electronic parking brake	-	-	-	*	●
Front electric windows	●	●	●	●	●
Rear electric windows	-	*	●	●	●
3 rear headrests	●	●	●	●	●
Height and reach adjustable steering wheel	●	●	●	●	●
Rear seats - 60:40 split and fixed base	●	●	●	●	●
6.2L front glovebox	●	●	●	●	●
<b>COMMUNICATION AND ON-BOARD TECHNOLOGY</b>					
12V socket	●	●	●	●	●
FM/AM/DAB tuner, 2x20W speakers, Bluetooth® audio streaming and hands free calls, USB and AUX sockets, smartphone cradle R6Go application - free download for compatible smartphones*	●	-	-	-	-
Easy Link Navigation: 7" touchscreen + 4x20W amplifier +FM DAB double tuner, sound auditorium, 2xUSB, 1xJack/ Bluetooth, smartphone integration plus: Apple CarPlay™/ Android Auto™	-	●	-	-	-
Easy Link Navigation: 9.3" touchscreen + 4x20W amplifier +FM DAB double tuner, sound auditorium, 2xUSB, 1xJack/ Bluetooth, smartphone integration plus: Apple CarPlay™/ Android Auto™^	-	-	●	●	●
Techno Pack : Auto dimming rear view mirror, hands free parking, MULTI-SENSE, wireless charging, around view monitor with 360 camera††	-	-	-	○	-
Techno Pack(E-TECH Launch Edition Hybrid) 360 camera, hands free parking and wireless charging	-	-	-	-	○
Rear parking sensors	-	●	●	●	●
MULTI-SENSE including ambient lighting and selectable drive modes	-	-	-	*	●
Auto dimming rear view mirror	-	-	-	*	●
Parking Pack: front parking sensors, rear parking camera	-	○	●	●	●
7" TFT Colour Instrument Display - Standard on E-TECH Hybrid Play and Iconic	-/●	-/●	●	●	●
10" TFT Colour Instrument Display*	-	-	-	○	-
Premium BOSE 9-Speaker Audio System with Easy Link Navigation: 7" touchscreen + 4x20W amplifier +FM DAB double tuner, sound auditorium, 2xUSB, 1xJack/ Bluetooth, smartphone integration plus: Apple CarPlay™/ Android Auto™ *	-	-	-	-	-
Premium BOSE 9-Speaker Audio System with Easy Link Navigation 9.3" touchscreen + 4x20W amplifier +FM DAB double tuner, sound auditorium, 2xUSB, 1xJack/ Bluetooth, smartphone integration plus: Apple CarPlay™/ Android Auto™	-	-	○	○	○
<b>SAFETY AND SECURITY</b>					
Spare wheel†	○	○	○	○	○
Airbag deactivation - front and side, drivers and passengers	●	●	●	●	●
Deadlocking and locking fuel cap	●	●	●	●	●
Driver and passenger front, side, head and curtain airbags	●	●	●	●	●
Driver height adjustable seat belt	●	●	●	●	●
Front and rear seatbelt warning sound	●	●	●	●	●
ISOFIX child seat fixing points on rear outermost seats	●	●	●	●	●
RAID (Renault Anti Intruder Device) automatic door locking	●	●	●	●	●
Rear door and window child locking function (front driver door control panel)	●	●	●	●	●
Remote central locking with Thatcham approved immobiliser	●	●	●	●	●
Tyre inflation kit	●	●	●	●	●
Tyre Pressure Warning Light	●	●	●	●	●
Traffic and Motorway Assistance Pack (TcCe130 EDC only):Traffic Jam companion (adaptive cruise control with stop & go and lane centering), blind spot warning, electronic parking brake with auto hold,central armrest with storage**	-	-	-	○	-
Front driver window with one touch facility and anti-pinch function	●	●	●	●	●

● = Standard; ○ = Optional; \* = Available as part of a pack; - = Not available. \*Coming mid 2020. \*\* Easy Drive only available with leather seats (Luxury pack). \*\*\*Genuine leather on front facing surface. †Come in full size on all petrol cars and space saver size on all diesel cars. ††Techno Pack and Traffic and Motorway Assistance pack are not compatible. ‡ Optional Exterior Colour Packs is only available with compatible colours. ‡The 17" Viva Stella Diamond cut Alloy with Black insets are free of charge on S EDITION only. ^Easy Link 9.3" requires Parking Pack and Convenience Pack on Iconic

# Key information

For prices, please refer to the Renault Car Price Guide available at your local dealer and on [www.renault.co.uk](http://www.renault.co.uk)

VERSIONS	WLTP CO <sub>2</sub> (g/km)*	Combined fuel consumption (mpg)*	HP	Benefit in kind†	Insurance group
Play S Ce 75	121	52.3	72	27%	3
Play TCe 100	119	54.3	100	26%	10
Play TCe 90 Auto CVT	130	49.6	90	29%	9
Iconic S Ce 75	121	52.3	72	27%	3
Iconic TCe 100	119	54.3	100	26%	10
Iconic TCe 90 Auto CVT	129	49.6	90	29%	9
Iconic Blue dCi 85	110	67.2	85	29%	10
<a href="#">Iconic E-TECH Hybrid 140 Auto</a>	<a href="#">98</a>	<a href="#">64.2</a>	<a href="#">140</a>	<a href="#">22%</a>	<a href="#">12</a>
S Edition TCe 100	120	54.3	100	27%	10
S Edition TCe 100 Auto CVT	132	47.9	100	29%	10
<a href="#">S Edition E-TECH Hybrid 140 Auto</a>	<a href="#">99</a>	<a href="#">64.2</a>	<a href="#">140</a>	<a href="#">22%</a>	<a href="#">12</a>
R.S. Line TCe 90	120	53.3	90	27%	10
R.S. Line TCe 90 Auto CVT	131	48.7	90	29%	10
R.S. Line TCe 130 Auto EDC	131	48.7	130	29%	16
<a href="#">R.S. Line E-TECH Hybrid 140 Auto</a>	<a href="#">99</a>	<a href="#">64.2</a>	<a href="#">140</a>	<a href="#">22%</a>	<a href="#">12</a>
<a href="#">Launch Edition E-TECH Hybrid 140 Auto</a>	<a href="#">99</a>	<a href="#">64.2</a>	<a href="#">140</a>	<a href="#">22%</a>	<a href="#">12</a>

\*WLTP figures shown are for comparability purposes. Actual real world driving results may vary depending on factors such as weather conditions, driving styles, vehicle load or any accessories fitted after registration. †Renault UK Limited does not offer tax advice and recommends that all Company Car Drivers consult their own accountant with regards to their particular tax position. Benefit in kind figures from 6th April 2020. Model availability correct at time of publishing. For further information regarding vehicle availability please consult with dealer.

OPTIONS	Play	Iconic	S Edition	R.S. Line	E-TECH Launch Edition Hybrid
Non metallic	o	o	o	o	o
Metallic paint	o	o	o	o	o
Orange Exterior colour pack : orange front grill chrome, side orange decoration, orange chrome on the wheels and black lower skirt with a orange stripe	-	o	o	-	-
Orange Interior Colour pack : air vents surrounds and gear gaiter surround in orange	-	o	o	-	-
Storage Pack : central armrest with storage and electronic parking brake with auto hold	-	-	-	o	●
Techno Pack : Auto dimming rear view mirror, hands free parking, MULTI-SENSE, wireless charging, around view monitor with 360 camera	-	-	-	o	-
Techno Pack (E-TECH Launch Edition Hybrid) : 360 camera, hands free parking and wireless charging	-	-	-	-	o
Luxury Pack : R.S. Line leather upholstery, horizontal red stripes stitching and heated front seats **	-	-	-	o	-
Comfort Pack : Rear electric windows, armrest with storage, interior vanity mirror with lighting	-	o	-	-	-
Easy LINK Navigation: 9.3" touchscreen with 4x20W amplifier, FM DAB double tuner, sound auditorium, 2 x USB. 1 x Jack/Bluetooth, smartphone intergration plus: Apply Carplay/Andriod Auto	-	-	●	●	●
BOSE premium speaker system with Easy Link Navigation 9.3" touchscreen with 4x20W amplifier, FM DAB double tuner, sound auditorium, 2xUSB, 1xJack/Bluetooth, smartphone integration plus: Apple CarPlay™/ Android Auto™	-	-	o	o	o
Parking Pack: front parking sensors, rear parking camera	-	o	●	●	●
Convenience Pack : Automatic headlights and automatic front wipers, automatic climate control and LED front reading light	-	o	-	-	-
Traffic and Motorway Assistance Pack (TCe130 EDC only) : Traffic Jam companion (adaptive cruise control with stop & go and lane centering), blind spot warning, electronic parking brake with auto hold,central armrest with storage *	-	-	-	o	-
Spare Wheel	o	o	o	o	o
10" TFT Colour Instrument Display	-	-	-	o	-
17" Viva Stella Diamond cut Alloy with Grey or Black inserts	-	o	●	-	●^^

● = Standard (therefore no cost); ○ = Optional; - = Not available \* Traffic and Motorway Pack only available with leather seats (Luxury pack). \*\*Genuine leather on front facing surface.  
 ^Easy Link 9.3" requires Parking Pack and Convenience Pack on Iconic ^^Only available with Black inserts



## EASYLIFE SERVICE PLAN

### EasyLife Service Plan

3 Years / 30,000 miles

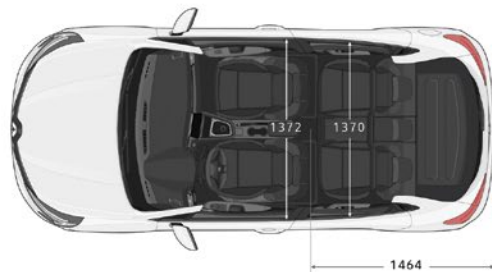
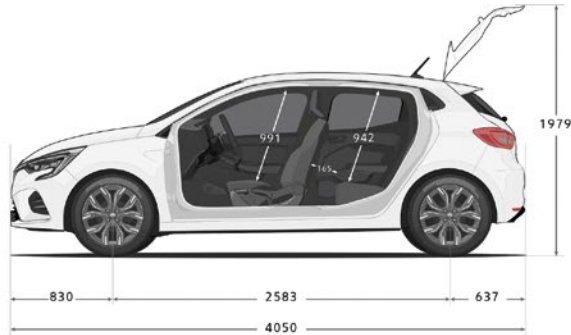
4 Years / 40,000 miles

One off\* and monthly\*\* payment options available

\*The EasyLife Service Plan offer is available for all retail vehicles and valid at participating dealers only or Renault.co.uk and can be purchased up to 12 months after registration or before the first service (whichever is sooner). Vehicles must be ordered between 4 January 2021 and 31 March 2021 and registered by 30 June 2021. \*\*The EasyLife Service Plan is available for eligible retail vehicles on a 36 or 48 monthly payment option and are only available at point of signing a finance agreement provided by Renault Finance, Rivers Office Park, Denham Way, Rickmansworth, WD3 9YS. Guarantees and indemnities may be required. You must be a UK resident (excluding the Channel Islands) and over the 18 to apply for finance. Terms & Conditions apply.

The Renault Service plan covers the manufacturer's minimum maintenance programme requirements for the term of the Service Plan purchased (refer to the Warranty and Service sheet in the Handover Document wallet for details). The plan ends when you reach the age or mileage limit (whichever comes first). Services must be carried out in line with the manufacturer's minimum maintenance programme requirements and servicing intervals within +/-1 month or 1,000 miles of the service interval and can only be carried out at a Renault Approved outlet. Service plans do not cover wear and tear items such as (but not limited to) tyres, wiper blades or brakes. For Service plan full Terms & Conditions visit [www.renault.co.uk/owners](http://www.renault.co.uk/owners). Cannot be part exchanged, refunded or transferred. All prices quoted are MRRP.

# Dimension diagrams



### DIMENSIONED DRAWING (mm)

<b>A</b>	Wheelbase	2,583
<b>B</b>	Overall length	4,050
<b>C</b>	Front overhang	830
<b>D</b>	Rear overhang	637
<b>E</b>	Front track	1,556
<b>F</b>	Rear track	1,542
<b>G</b>	Overall width with/without door mirrors	1,836 / 2,058
<b>H</b>	Unladen height/with longitudinal roof bars	1,607/1,613
<b>H1</b>	Height with tailgate open (unladen)	1,979
<b>J</b>	Unladen boot sill height	761
<b>K</b>	Ground clearance	200
<b>L</b>	Knee room in 2 <sup>nd</sup> row	220
<b>M</b>	Front elbow width	1,480
<b>M1</b>	Rear elbow width	1,455
<b>P</b>	Headroom at 14° in 1 <sup>st</sup> row (front seats)	905
<b>P1</b>	Headroom at 14° in 2 <sup>nd</sup> row (rear seats)	910
<b>Y</b>	Interior width between wheel arches	1,099
<b>Z</b>	Max. loading length bench seat folded up/down	864/1,620
<b>R/R1</b>	Angles of front/rear bumpers in degrees	18/28

### BOOT VOLUME (Litres)

Boot volume (petrol/diesel/hybrid)	391/366/301
Boot volume with rear bench seat folded (petrol/diesel)	1,069/1,054

\* Door mirrors folded down

# Technical Specification

ENGINE	SCe 75	TCe 90	TCe 90 Auto CVT	TCe 100	TCe 100 Auto CVT	TCe 130 Auto EDC	Blue dCi 85	E-TECH Hybrid 140 Auto
Emission standard	EU6D-Temp	EU6D-FULL	EU6D-FULL	EU6D-Temp	EU6D-Temp	EU6D-Temp	EU6D-Temp	EU6D-FULL
Protocole	WLTP	WLTP	WLTP	WLTP	WLTP	WLTP	WLTP	WLTP
Engine Code	RJABE2MT5TA03	H4Dt 470	H4Dt 470	RJABE2MT5TA06	RJABE2MTXTA0EA5	RJABE2MFBTA04	RJABD2AD6TA12	H4M C6 / MU
Induction Capacity (cc)	999	999	999	999	999	1330	1461	1598
Bore x Stroke	71x84.1	72.2x81.3	72.2x81.3	72.2x81.3	72.2x81.3	72.2x81.2	76 x 80.5	78 x 83.6
No of Cylinders/Valves	3/12	3/12	3/12	3/12	3/12	4/16	4/8	4/16
Maximum Power - kw ISO (hp DIN) at rpm	53 (72) at 6250 rpm	67 Kw at 5000 rpm	67 Kw at 5000 rpm	74 (100) at 5000 rpm	74 (100) at 5000 rpm	96(130) at 5000 rpm	63 (85) at 3750 rpm	103(140) at 5600rpm <sup>Λ</sup>
Maximum torque - Nm ISO (mkg DIN) at rpm	95 at 3600 rpm	160Nm at 2000 rpm	140 Nm at 2000 rpm	160 at 2750 rpm	142 at 1750 rpm	240 at 1600 rpm	220 at 1750 rpm	Petrol engine: 144 at 3200 rpm Electric motor: 250
Injection Type	Multipoint sequential	Turbo with Waste Gate Electric	Turbo with Waste Gate Electric	Turbo / Multipoint sequential	Turbo / Multipoint sequential	Turbo / Direct injection	Turbo/ Direct Common Rail	Multipoint indirect
Fuel Type	Unleaded petrol	Unleaded petrol	Unleaded petrol	Unleaded petrol	Unleaded petrol	Unleaded petrol	Diesel	Petrol Hybrid (HEV)
Catalytic Converter	Yes	Yes	Yes	Yes	Yes	Yes	Yes	Yes
Stop and Start	Yes	Yes	Yes	Yes	Yes	Yes	Yes	Yes
Battery type (HEV only)								Lithium-ion (68 cells)
Battery voltage (HEV only)								230V
Capacity (kWh) (HEV only)								1.2 kWh
<b>GEARBOX</b>								
Number of Forward Gears	5	6	6	5	7	7	6	6
Manual / Automatic	Manual	Manual	Automatic	Manual	Automatic	Automatic	Manual	Automatic
<b>STEERING</b>								
Power Assisted	Electric power steering							
Turning Circle between kerbs/walls m	10,4	10,42	10,42	10,4	10,4	10,4	10,4	10,4
Number of steering wheel turns with standard tyres	2,7							
<b>SUSPENSION</b>								
Front	MacPherson type with rectangular shaped lower arm and anti-roll bar - Pseudo Mac Pherson							
Rear	Torsion beam with programmed deflection - coil springs - Semi-rigid axle							
<b>WHEELS / TYRES</b>								
Tyres (16" wheels)	195 / 55 R 16 (87) H	195 / 55 R 16 (87) H	195 / 55 R 16 (87) H	195 / 55 R 16 (87) H	195 / 55 R 16 (87) H	-	195 / 55 R 16 (87) H	TBC
Tyres (17" wheels)		205 / 45 R 17 (88) H	205 / 45 R 17 (88) H	205 / 45 R 17 (88) H	205 / 45 R 17 (88) H	205 / 45 R 17 (88) H	205 / 45 R 17 (88) H	TBC
<b>BRAKING SYSTEM</b>								
Anti-locking Braking Systems (ABS)	Standard							
Electronic Brake Distribution (EBD)	Standard							
Front: Ventilated Discs (mm) / width (mm)	258 / 22	280x24(15")/ 258x22(16"/17")	280x24(15"/16")/ 258x22(17")	280 /24 (16/17")	280 /24 (16/17")	280 /24	258 / 22 (16") 280 /24 (17")	280 /24 (17")
Rear: Drum (T) / Discs (DP) Ø (mm) - width (mm)	Brake drum/ 260 - 8							
<b>PERFORMANCE</b>								
Maximum Speed mph (kph)	100 (162)	112 mph (180 kph)	TBC	116 (187)	113 (182)	124 (200)	110 (178)	112 (180)
0- 62 mph in seconds (0-100 km/h)	16.4	7.60	TBC	11.8	11.5	9.0	14.7	9.9
400 m D.A. (s)	20.4	18.60	TBC	18.2	18.1	16.5	19.7	17.5
1000 m D.A. (s)	37.3	33.80	TBC	33.7	33.2	30.1	76,0	31.0
<b>FUEL CONSUMPTION AND EMISSIONS*</b>								
Combined (mpg)	52.3	53.3-54.3	TBC	54.3	47.88-48.7	49.6	67.2	64.2
Combined (L/100 km)	5.4	5.3-5.2	TBC	5.2	5.9-5.8	5.7	4.2	4.4
WLTP CO <sub>2</sub> (g/km)	121	117-121	TBC	119-120	131-133	130-131	109-110	98-99
<b>FUEL TANK CAPACITY</b>								
Fuel Tank Capacity - Gallons (l)	11 (42)	11 (42)	11 (42)	11 (42)	11 (42)	11 (42)	10 (39)	10 (39)
<b>WEIGHT</b>								
Kerb Weight (Excluding Driver) (kg)	1148	TBC	TBC	1178	1201	1248	1277	1323
Payload (kg)	531	TBC	TBC	513	489	515	513	520
Gross Vehicle Weight (kg)	1573	TBC	TBC	1603	1626	1673	1702	1758
Gross Train Weight (kg)	2473	TBC	TBC	2503	2526	2573	2602	2658
Maximum Towing Weight Braked - Driver Only (kg)	900	TBC	TBC	900	900	900	900	900
Maximum Towing Weight Unbraked - Driver Only (kg)	555	TBC	TBC	580	590	615	630	555
<b>SERVICING INTERVALS</b>								
Service intervals	18,000 miles or 1 year whichever comes sooner							

\* Subject to final homologation <sup>Λ</sup>Total powertrain output which includes the petrol engine and the two electric motors combined

<sup>Λ</sup>WLTP figures shown are for comparability purposes; only compare figures with vehicles tested to the same technical procedures. Actual real world driving results may vary depending on factors such as weather conditions, driving styles, vehicle load or any accessories fitted after registration. WLTP is a new test used for fuel consumption and CO<sub>2</sub> figures however until April 2020 the CO<sub>2</sub> figures are based on the outgoing (NEDC) test cycle which will be used to calculate vehicle tax on first registration. Please visit [renault.co.uk/configure](http://renault.co.uk/configure) for WLTP figures for any selected options.

# Renault Services

## 5 Years Warranty

Your Renault car is covered by a warranty package for up to 5 years from date of first registration with unlimited mileage during the first 24 months, then limited to a total of 100,000 miles or 5 years, whichever comes first. Your Renault Dealer is able to repair or replace without charge, parts that are found to have a material or assembly defect that is recognised by Renault. The paintwork warranty runs for 3 years and the anti-corrosion warranty for 12 years<sup>9</sup>.

## 3 Years Roadside Assistance

Should you need it, we'll provide emergency roadside repairs or tow you to the nearest Renault Dealer. This service is available 24 hours a day and is provided for 36 months from the date of first registration (unlimited mileage for first 24 months, then limited to a total of 60,000 miles or 3 years, whichever comes first). Assistance is provided within the UK & Northern Ireland only at roadside, home and includes national recovery and onward travel. Renault Assistance applies to mechanical or electrical defects which are covered by warranty.

For Renault Assistance Terms and Conditions please visit [www.renault.co.uk/assistance](http://www.renault.co.uk/assistance)

## EasyLife Service Plan

Renault's EasyLife Service Plan is the ultimate package to provide care free servicing for the first 3 years or 30,000 miles (whichever is sooner). It really is the hassle free way to take care of our Renault and benefits from;

- Inflation Proof Servicing - You know exactly what you'll pay and there are no hidden costs
- Peace of Mind - No matter where life takes you, we'll be there in over 5000 workshops across Europe
- Renault Expertise & Quality - Our highly trained technicians know your Renault inside out

The EasyLife Service Plan contains Renault services in-line with the manufacturer's service schedule, plus comes with a complimentary vehicle health check to ensure your Renault is in the best condition possible.

EasyLife servicing and warranty enhancements also available. Refer to the Price Guide for more details.

One off\* and monthly\*\* payment options available.

## Finance options\*\*\*

There are a wide variety of ways in which the purchase of a new vehicle can be financed. Renault Finance offers all of them, so whether you're a fleet buyer or private buyer, Renault Finance is ideally placed to tell you which plan or combination of plans best suits your needs and circumstances.

## Renault car insurance<sup>1</sup>

A car as well designed as your Renault deserves an insurance policy to match. Renault Insurance has been specifically created to provide superb protection for you and your car. Unlike most other UK insurers, in the event of an accident, Renault Insurance will have your Renault repaired at a Renault Approved Bodyshop using only Renault approved parts and approved repair methods. This maintains your Renault's safety rating, protects its resale value and preserves its Renault warranty<sup>4</sup>. Renault Insurance also offers a courtesy car for the duration of a repair at a Renault Approved Bodyshop.

Renault car insurance: **0330 102 7794<sup>†</sup>**  
[www.renaultcarinsurance.co.uk](http://www.renaultcarinsurance.co.uk)

Lines are open Mon - Thurs 8.30am - 7pm, Fri 9am - 6pm, Sat 9am - 5pm

## Renault iCare

Is an innovative Service, Maintenance & Repair product that supplies Business customers with a fully supported, managed hassle free service and maintenance package.

Renault iCare is a "Pay-As-You-Go" product that insures your vehicle is maintained by Renault technical experts when work is required.

iCare provides the following benefits:

- Full Service, Maintenance & Repair cover in the Renault Dealer Network
  - Tyres can be included within the contract at an additional fixed cost
  - Ancillary equipment can also be included (at an additional fixed monthly cost)
  - Excludes: Damage/Neglect/Abuse/Glass & Bulbs

- A fixed, pre agreed pence per mile rate
- No excess mileage charges at the end of the contract
- No pooled mileage administration
- Minimalise downtime

For more information and to obtain a quote based on your requirements, please speak to your local Renault Business dealer or visit [www.renault.co.uk/icare](http://www.renault.co.uk/icare)

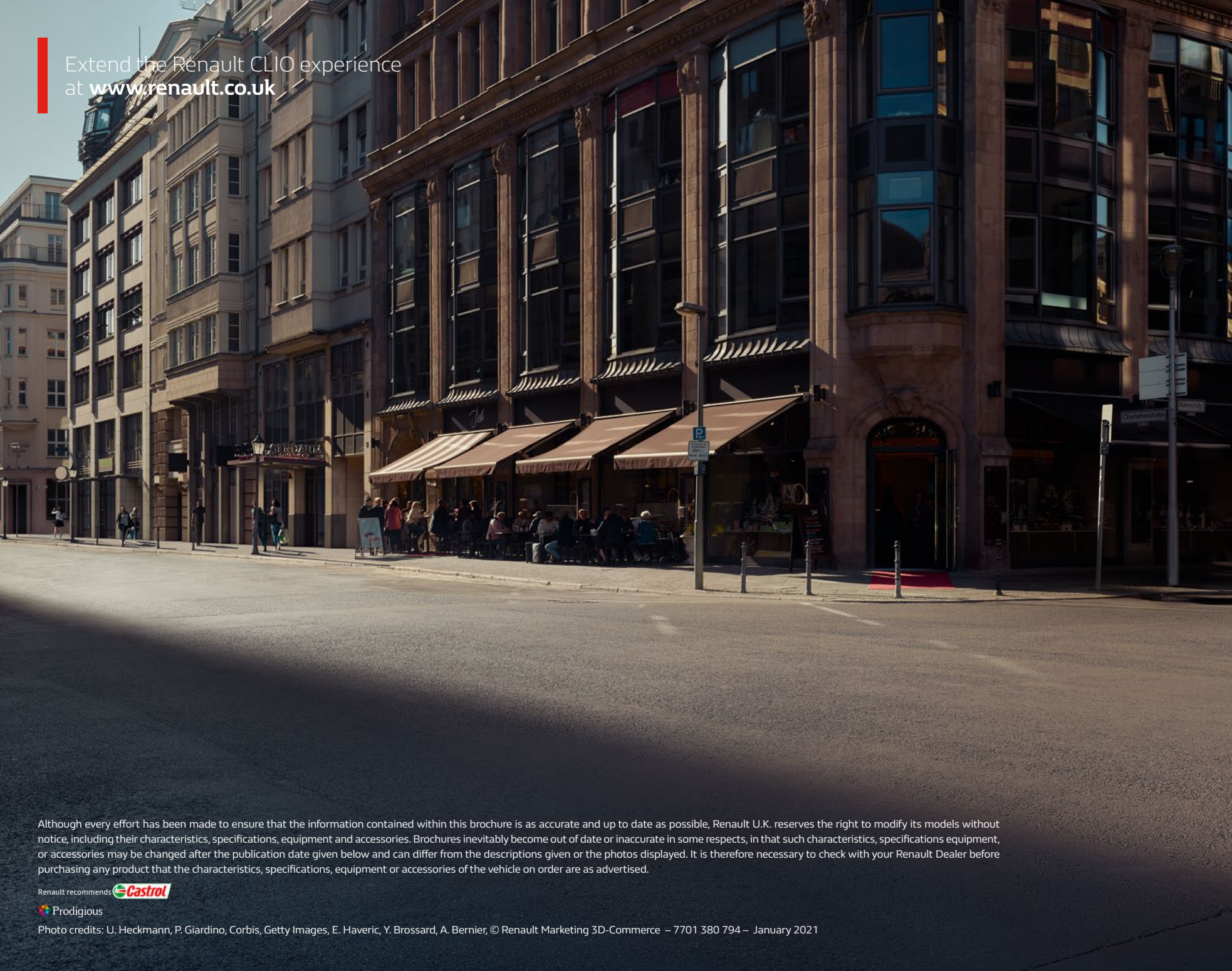
## Customer Relations

Renault knows the value of communicating with its customers and we have established effective ways to keep in touch with you. If after speaking to your local Renault dealership you are not completely satisfied, please contact the Renault UK Customer Relations Team on 0344 3350000<sup>†</sup> (Mon-Fri 8.00am to 6.00pm. Closed on Bank Holidays. Live Chat Mon-Fri 8.00am to 9.00pm). You can also visit our website [www.renault.co.uk](http://www.renault.co.uk) or write to us at: Renault UK Ltd, The Rivers Office Park, Denham Way, Maple Cross, Rickmansworth, Hertfordshire, WD3 9YS.




<sup>9</sup> 5-year warranty valid on new cars (except Traffic passenger). Exclusions and limitations apply. For Warranty Terms and Conditions please visit [www.renault.co.uk/warranty](http://www.renault.co.uk/warranty). <sup>\*</sup>The EasyLife Service Plan offer is available for all retail vehicles and valid at participating dealers only or Renault.co.uk and can be purchased up to 12 months after registration or before the first service (whichever is sooner). Vehicles must be ordered between 4 January 2021 and 31 March 2021 and registered by 30 June 2021. <sup>\*\*</sup>The EasyLife Service Plan is available for eligible retail vehicles on a 36 or 48 monthly payment option and are only available at point of signing a finance agreement provided by Renault Finance. Rivers Office Park, Denham Way, Rickmansworth, WD3 9YS. Guarantees and indemnities may be required. You must be a UK resident (excluding the Channel Islands) and over the 18 to apply for finance. Terms & Conditions apply. <sup>\*\*\*</sup>Finance provided by Renault Finance, P.O. Box 149, Watford, WD17 1FJ. Guarantees and indemnities may be required. You must be at least 18 and a UK resident (excludes Isle of Man and Channel Islands) to apply. Subject to status, terms and conditions apply. <sup>†</sup>Calls to 0330 numbers are free if used as part of your inclusive mobile minutes and are charged at local rates from landlines. <sup>††</sup>If your insurer uses non-approved parts which subsequently fail, they may not be covered under your manufacturer's warranty. <sup>†††</sup>Renault Insurance is arranged and administered by Verex Insurance Services Ltd, which is registered in England and Wales No. 05686831 at Batchworth House, Church Street, Rickmansworth, Herts, WD3 1JE and authorised and regulated by the Financial Conduct Authority, No. 487185. Verex Insurance Services Ltd arranges policies from a panel of insurers, details are available on request.

Extend the Renault CLIO experience  
at [www.renault.co.uk](http://www.renault.co.uk)



Although every effort has been made to ensure that the information contained within this brochure is as accurate and up to date as possible, Renault U.K. reserves the right to modify its models without notice, including their characteristics, specifications, equipment and accessories. Brochures inevitably become out of date or inaccurate in some respects, in that such characteristics, specifications equipment, or accessories may be changed after the publication date given below and can differ from the descriptions given or the photos displayed. It is therefore necessary to check with your Renault Dealer before purchasing any product that the characteristics, specifications, equipment or accessories of the vehicle on order are as advertised.

Renault recommends 

 Prodigious

Photo credits: U. Heckmann, P. Giardino, Corbis, Getty Images, E. Haveric, Y. Brossard, A. Bernier, © Renault Marketing 3D-Commerce – 7701 380 794 – January 2021