

# RENAULT ZOE VAN E-TECH ELECTRIC



7th June 2022







Zoe Van E-Tech electric  
The future is here!



# Revolutionary from the start...

Rediscover the pleasure of driving with Zoe Van E-Tech electric. Experience cutting edge technology, over 200 miles of driving range and join the electric revolution.



**2009**

Renault unveil Zoe, FLUENCE Z.E, KANGOO Z.E and TWIZY concepts at the Frankfurt Motor show.



**2012**

Production version of Zoe unveiled at Geneva motor show. KANGOO Z.E voted international van of the year.



**2015**

New, more efficient R90 motor introduced, giving 149 miles NEDC<sup>(1)</sup> range.



**2018**

More powerful R110 motor introduced, offering even greater driving pleasure.



**2020**

Zoe Van E-Tech electric is launched the first fully electric car-derived van in the UK



**2011**

Renault announce they will produce the TWIZY and begin taking orders. Production of FLUENCE Z.E and KANGOO Z.E also begins.



**2013**

Zoe is available to buy in the UK.



**2016**

Zoe with Z.E. 40 battery is launched allowing a 186 mile WLTP<sup>(2)</sup> range, setting a new milestone in the market of affordable electric vehicles.



**2019**

New Zoe is launched with a driving range of up to 245 miles<sup>(2)</sup> and faster, more versatile charging options.



(1) Homologated range according to NEDC test cycle, for comparison purposes, 149 miles, and may not reflect real life driving results.

(2) Business R110 245 miles, Business+ R110 239 miles. WLTP figures shown are for comparability purposes. Figures obtained after the battery was fully charged. Actual real-world driving results may vary depending on factors such as the starting charge of the battery, accessories fitted after registration, weather conditions, driving styles and vehicle load. Renault estimates average real-world driving figures for this vehicle as 233 miles in summer and 150 miles in winter, depending on the factors above.

# ...and recognised for it





# Renault E-Tech electric

## Always a step ahead

Renault has been pushing the boundaries of innovation from revealing the Z.E concept car in 2008, and since then has been a leader in electric vehicle manufacture in Europe. It has been a priority to fulfil our commitment and continue to develop our technology so that our vehicles stay at the forefront of the electric vehicle market. In 2016, we launched Zoe with the Z.E. 40 battery, with almost twice the capacity of the previous version and 2018 saw the introduction of the R110 motor, bringing Zoe more power than ever before. 2019 brought with it New Zoe, with a 245<sup>(1)</sup> mile driving range, along with new faster and more versatile charging options. Finally, 2020 saw the launch of the Zoe Van E-Tech electric, the first fully electric car derived van

## First place on the track - first choice on the road

Our commitment to electric motoring innovation runs deeply in Renault's brand DNA. We were a founding partner in Formula E™, the FIA's newest race series. Winning the team championship in 2014/15 and 2015/16 seasons, along with the driver's championship in 2015/16, proves superior electric technology on the track and as one of Europe's best selling EV brands on the road.



(1) Business R110 245 miles and Business+ R110 239 miles. WLTP figures shown are for comparability purposes. Figures obtained after the battery was fully charged. Actual real-world driving results may vary depending on factors such as the starting charge of the battery, accessories fitted after registration, weather conditions, driving styles and vehicle load. Renault estimates average real-world driving figures for this vehicle as 233 miles in summer and 150 miles in winter, depending on the factors above.

## Easy Electric Life

Electric mobility does not have to be more complicated than fuel-powered vehicles.

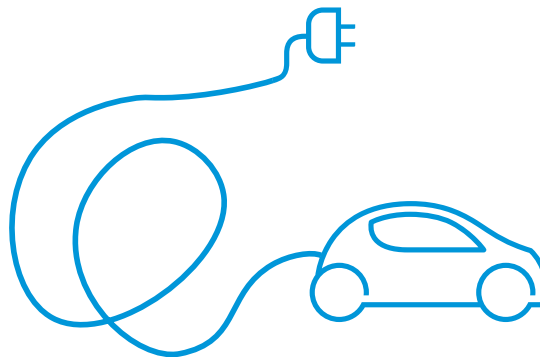
Far from it, electric power comes as second nature in most areas of our lives - have you ever thought about filling up your smartphone with fuel? Your van does not need to be any different from your phone, simply put it on charge.

## Renault PRO+ Electric Vans

Electric isn't just the future, it's right now. That's why our customers have been driving electric vehicles since 2011, and we've since developed the largest model range of electric LCVs in the UK. For you and your business, the result is key. So you'll be pleased to hear that with a Renault PRO+ electric van, you could make significant savings compared to running a diesel or petrol van. Plus, with over 35,000 charging points in the UK, isn't it time for you to join the electric revolution?

## It's in our nature

Through supplying the Eden Project in Cornwall with a fleet of 3 Zoes, 13 Kangoo E-Tech electric Vans and 4 Twizys, we are supporting them in their mission to connect people with each other and the living world, exploring how we can work together towards a better future.





## WHATCAR?

### Van awards 2021

Compact van  
Best Value for  
Ownership Costs

**Renault**  
Zoe Van





# What makes Zoe Van E-Tech electric so special?

No fuss, zero tailpipe emissions, easy to drive - these are all the things we love about electric vehicles and all the things that the Zoe Van E-Tech electric stands for. There are many benefits to owning a Zoe Van E-Tech electric, including:

**Chameleon Charger™.** Our innovative Chameleon Charger™ is unique to Renault and ensures your Zoe Van E-Tech electric is always able to charge at the maximum power available to it, saving you time and making the most of any charging station whilst on the move or at home!

**Truly connected.** A connected life is no longer a thing of the future. E.V. Services takes communication between smartphone and van to another level, allowing features such as remote charging, monitoring of your charge status and pre-conditioning.<sup>(1)</sup>

**Style.** We all want style in our lives and Zoe Van E-Tech electric gives you just that. With its distinctive design and expressive looks, Zoe Van E-Tech electric has its very own electric identity.

**Low running costs.** Charging Zoe Van E-Tech electric at home, work or on the road is not only easy but cost effective as well. With a full charge costing around £8<sup>(2)</sup>, your business will start saving money, journey after journey!

**Plug in Van Grant.** Zoe Van E-Tech electric qualifies for the Plug in Van Grant (PiVG) - a government grant of 35%, up to a maximum value of £2,500, for small vans less than 2.5 tonnes, towards the cost of a new ultra-low carbon van, which is provided to a consumer at the point of purchase. The grant is applied to the Total Retail Price after discounts which includes the Basic Price and the VAT (this excludes the delivery charge, first registration and any optional extras).

<sup>(1)</sup> Features available on MY Renault, E.V. Services with valid subscription.

<sup>(2)</sup> Recharge cost £7.48 based on 9.25 hours of 14.4p per kWh (Source: UK Power). Full recharge of the 52kW battery.







## Stylish yet practical

Zoe Van E-Tech electric shows off its character with expressive design, smooth lines, new C-shaped 100% LED lighting, fog lamps and a new distinctive grille. The new wider rear lights give a bold stance with an LED light beam that highlights the contours of the bodywork. Under the bonnet is a powerful R110 motor, providing great performance and driving pleasure, meanwhile, new B Mode increases regenerative braking and allows for a one-pedal driving experience.

The Zoe Van E-Tech electric provides the right balance of emission-free driving, eye-catching good looks and practical design that's perfect for businesses and fleet customers. As the only fully-electric car-derived van on the market, the generous rear load space helps customers to transport cargo securely.





## Keeping you connected

Ultra-connected to its surrounding world, Zoe Van E-Tech electric is first and foremost connected to you. As soon as you approach Zoe Van E-Tech electric, your hands-free card unlocks the doors to a van that combines technology with simplicity. The interior offers enhanced comfort with seat upholstery made from recycled fabric<sup>(1)</sup>, with special attention given to sound insulation to provide an even more relaxing drive.

The dashboard is enhanced with its new 10" wide driver's screen, providing all the information you need when on the road, whilst the new steering wheel gives you control at your finger tips. Enjoy the brand new EASY LINK system, with a choice of 7"-9.3" screens and more connectivity than ever before.

(1) BUSINESS+ model is fitted with recycled fabric seat upholstery.



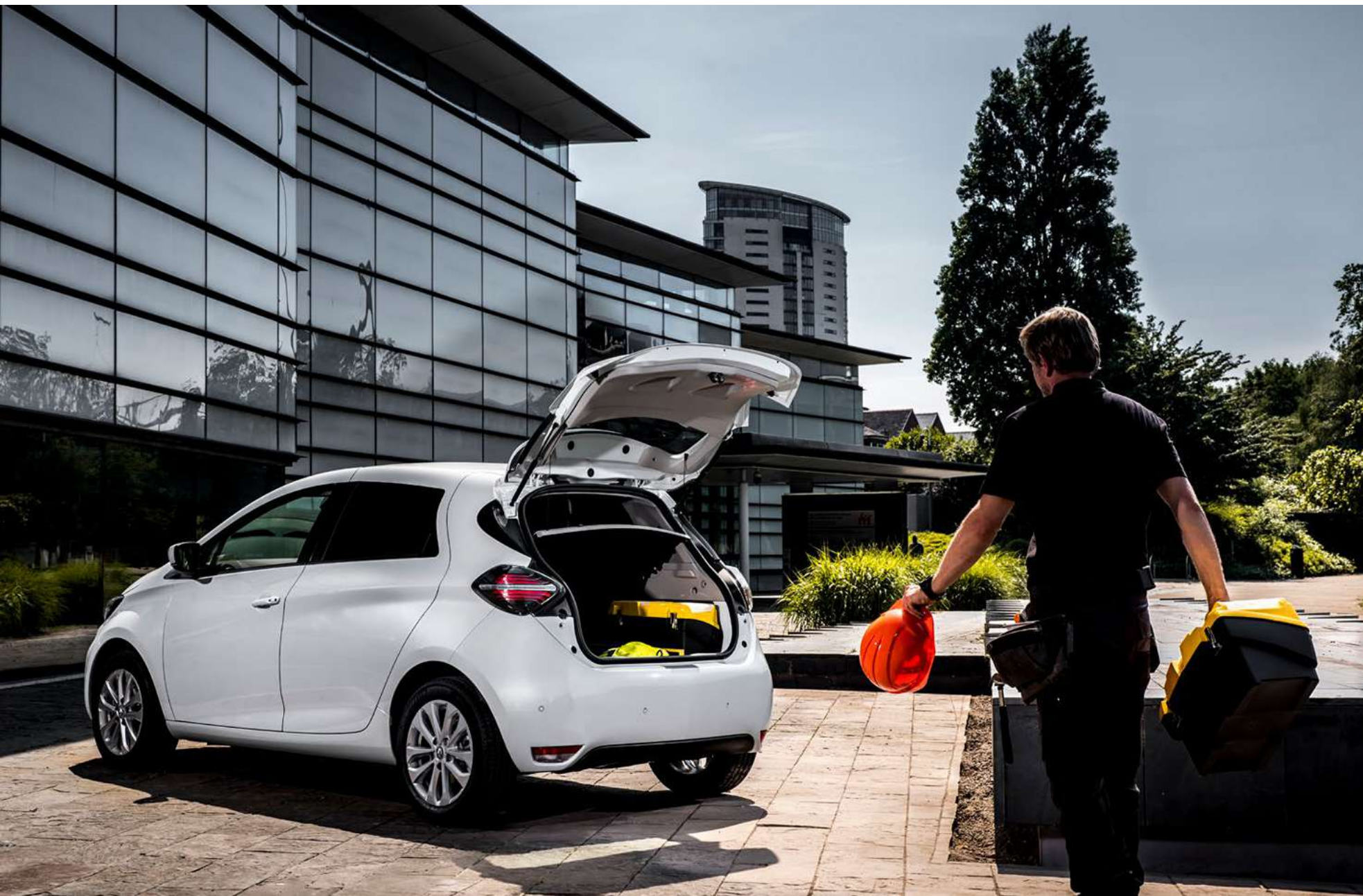




## Designed for you and your business

Zoe Van E-Tech electric offers an impressive 1m<sup>3</sup> of rear load space which also includes 4 anchorage points to tie down objects safely and securely. The load compartment cover is there to keep, whatever it is you are carrying out, of sight and the flooring is made from durable rubber designed to stand the test of time.







## New E.V. 50 battery

Renault's E.V. 50 battery stores 25% more energy than its predecessor, despite having exactly the same dimensions! With a driving range of up to 245 miles<sup>(1)</sup>, you can travel further with confidence. Located under the floor to lower the centre of gravity, the battery has no impact on either the roominess of the van or the load volume. With Zoe Van E-Tech electric offering 100% torque from the moment you put your foot to the pedal, a quiet motor and no gear changes or petrol stations, you can enjoy great performance and a relaxed driving experience.



## 8 year battery warranty

For added reassurance and peace of mind, the traction battery on Zoe Van E-Tech electric comes with an 8 year/100,000 mile warranty<sup>(2)</sup>, giving you confidence in our technology and on the road.

(1) Business R110 245 miles and Business+ R110 239 miles. WLTP figures shown are for comparability purposes. Figures obtained after the battery was fully charged. Actual real-world driving results may vary depending on factors such as the starting charge of the battery, accessories fitted after registration, weather conditions, driving styles and vehicle load. Renault estimates average real-world driving figures for this vehicle as 233 miles in summer and 150 miles in winter, depending on the factors above.

(2) 8 year/100,000 mile traction battery warranty (whichever is reached first). For full Warranty Terms and Conditions please visit [www.renault.co.uk/warranty](http://www.renault.co.uk/warranty).



## Innovation for a better life

What is the purpose of innovation, if it doesn't offer a tangible benefit?

That's why all of Zoe Van E-Tech electric's innovative features are specifically designed in order to make your electric life even easier.

**Regenerative braking:** Every time the driver brakes, the battery gets a boost of energy. This boost increases when you switch Zoe Van E-Tech electric into B Mode!

**Heat pump:** The heat pump is able to air-condition and heat your car more efficiently than a traditional system, meaning you can conserve more of your batteries energy for driving range.

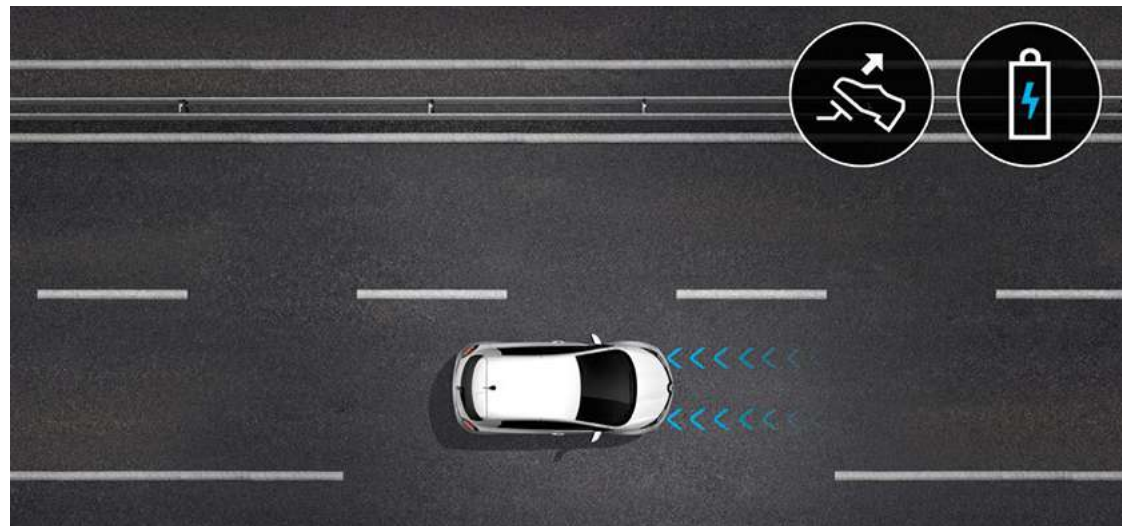
**Chameleon Charger™:** Unique to Renault, the Chameleon Charger™ is always able to charge at the maximum power<sup>(1)</sup> available and is therefore quicker and more efficient, saving you time and money.

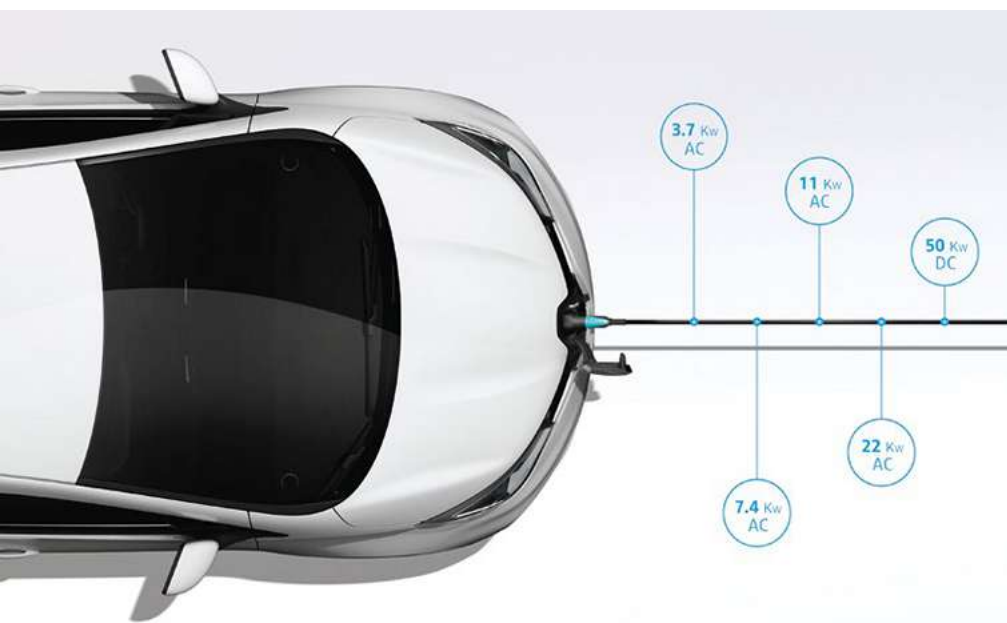
**Pre-conditioning:** Through E.V. Services<sup>(2)</sup> you can pre-set the temperature of the car so it's ready for you before you get in. Warm in the winter and cool in the summer!

**ECO Mode:** When using the ECO Mode, the dynamic performance and air conditioning or heating is limited to maximise Zoe Van E-Tech electric's driving range.

(1) For AC charging, between 3kW to 22kW.

(2) 3 years subscription to E.V. Services on all models after which time they will need to be renewed. E.V. Services are compatible with Apple iOS® and Android® devices.





## Battery and charging

Just like the other models in the Renault E-Tech electric range, Zoe Van E-Tech electric is fitted with a lithium-ion battery, offering great performance. It is very simple to charge, even when it is fully discharged and it can also be recycled at the end of its life.

Thanks to The Chameleon Charger™ that is unique to Renault, Zoe Van E-Tech electric is compatible with various power sockets and sources, providing you with a range of charging options. The result? Minimised charging times and maximised flexibility.

There are three easy ways to charge:

**1. At Home or Work.** Charge at home or work from a 7kW charger that can fully charge Zoe Van E-Tech electric overnight in 9-10 hours. With the new E.V. 50 battery, Zoe Van E-Tech electric can go even further so the majority of your charging will probably take place, hassle free, at home!

**2. Destination.** There are already over 11,000 public charging locations nationwide, that's more charging locations than petrol stations! The majority of these charging locations will provide a 3kW to 22kW charge and could charge your Zoe Van E-Tech electric from 0-100% in as little as 3 hours<sup>(2)</sup>.

**3. Rapid.** These charge points are placed at key locations such as motorway services and have upwards of a 50kW capacity. They are ideal for long journeys and will charge your Zoe Van E-Tech electric<sup>(3)</sup> with E.V. 50 battery from 0-80% in 1h 10, or if you are only making a brief stop, just 30 minutes charging will get you an extra 90 miles of range.

### Not sure where to find chargepoints around you?

Use your EASY LINK navigation system or MY Renault App<sup>(1)</sup> to find local charge points or find charge points along your route.

(1) MY Renault is compatible with Apple iOS® and Android® devices and is available in the App store and Google Play® store.

(2) Based on 22kW charger.

(3) 50kW rapid charging capability is a payable option. See Renault Range Car Price Guide for further details.



# Driving Range

Now that Zoe Van E-Tech electric is available with E.V. 50 battery giving a WLTP\* range of up to 245 miles on one charge, range anxiety is a thing of the past. With a real life estimate of 233 miles in summer and 150 miles in winter\*\* Zoe Van E-Tech electric is able to get you wherever you need to go with less need to recharge on the way, saving you time and money.

Range (miles)	Business R110	Business+ R110	Cost per mile <sup>(1)</sup>
WLTP*	245	239	3p
Summer (real-world estimate)	233	233	3p
Winter (real-world estimate)	150	150	5p

**\*What is the WLTP and why the real-life range is similar to it?**

Worldwide Harmonized Light Vehicles Test Procedures (WLTP), this new homologation protocol gives fuel consumption and driving range results that are much closer to real life conditions figures than the NEDC protocol. While the old NEDC test determined test values based on a theoretical driving profile, the WLTP cycle was developed using real-driving data, gathered from around the world. WLTP therefore better represents everyday driving profiles. Business R110 245 miles and Business+ R110. CO<sub>2</sub> whilst driving: 0 g/km, MPG: n/a. Figures shown are for comparability purposes; only compare figures with vehicles tested to the same technical procedures. The electric range shown achieved using the new (WLTP) test procedure. Figures obtained after the battery was fully charged. Actual real-world driving results may vary depending on factors such as the starting charge of the battery, accessories fitted after registration, weather conditions, driving styles and vehicle load. Renault estimates average real-world driving figures for this vehicle as 233 miles in summer and 150 miles in winter, depending on the factors above.

**\*\*Why is the range reduced in winter?**

Like all batteries, those in E-Tech electric vehicles are less efficient in cold weather than at warmer ambient temperatures. This means that you can expect a reduction in the range of your Renault E-Tech electric in the winter. Also, in winter you are more likely to use the heating, which means Zoe Van E-Tech electric consumes more energy. Summer and winter range estimates based on real-world driving data.

Charging times <sup>(2)</sup>	Business R110	Business+ R110	
7kW (0-100%)	9h 25	9h 25	This is the rate a home charging point will be charging at.
22kW (0-100%)	3 hours	3 hours	On most journeys, there is no need to fully recharge and you will typically only top-up for half an hour at a motorway station. The perfect excuse for a cup of coffee.
50kW (0-80%)	1h 10	1h 10	Great if you are planning a longer journey! Zoe Van E-Tech electric with rapid charge option can regain 90 miles of driving range in just 30 minutes of charging. Take a well earned break from driving and recharge at the same time as your Zoe Van E-Tech electric.

(1) Recharge cost £7.48, based on 9.25 hours of 14.4p per kWh (Source: UK Power). Full recharge of the 52kW battery.  
(2) Charging time and recovered driving range depend on temperature, battery wear, the power delivered by the station, and your charge level.



## Greater performance and more fun

If you love driving, then driving Zoe Van E-Tech electric will be an absolute joy. With the new R110 electric motor (107 hp), Zoe Van E-Tech electric offers you a fantastic driving experience. With instant acceleration and more power, it makes motorway driving a breeze. Using the one-touch control on the new E-shifter gear selector, switch to B mode and try out a one-pedal driving experience and feed energy back to your battery at the same time!







## Truly connected

Listen to your favourite playlists, browse your applications and make calls easily, thanks to the new EASY LINK multimedia system, with the 7" or optional 9.3" touch screens, both with Android Auto™ or Apple CarPlay™ as standard<sup>(1)</sup>.

Directly connected to TomTom services, models with on-board navigation offer you a wealth of information in real time: traffic delays, weather, location of your nearest charging stations, and more. Unsure of your destination address? All you need are two or three keywords to find it using Google address search. Simple, fast and smooth, Zoe Van E-Tech electric ensures you are truly connected at all points of your journey.

(1) Check your phone's capability at point of purchase with your dealer.











# Take control of your van remotely with MY Renault

A 100% electric life is made easier thanks to the MY Renault app:

**My van's location.** Parked in an unfamiliar area? Find and be guided to the location of your Zoe Van E-Tech electric using your MY Renault app. View your driving range and locate available charging stations nearby or at your destination.

**Journey planner.** Instantly prepare your journey on your smartphone: the application automatically includes stops at charging stations and takes into account charging times to calculate your arrival time. You just need one click to send the proposed route to Google Maps and then to the screen in your Zoe Van E-Tech electric thanks to the smartphone replication.

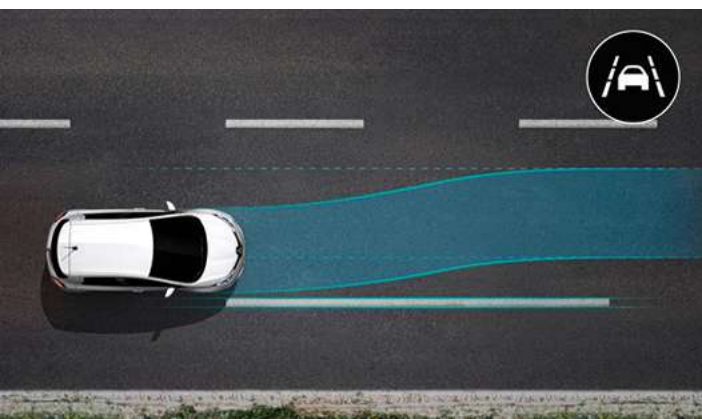
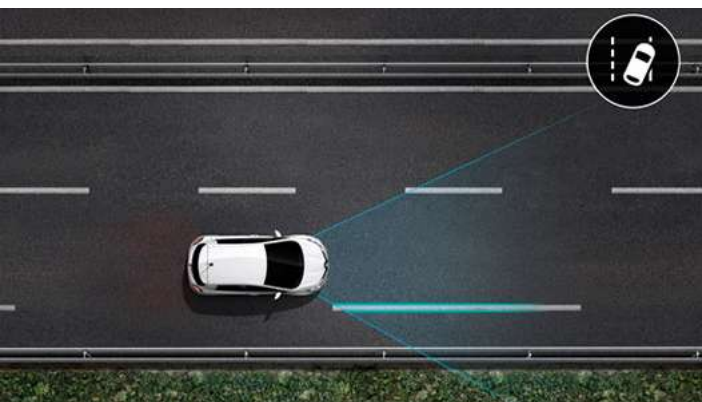
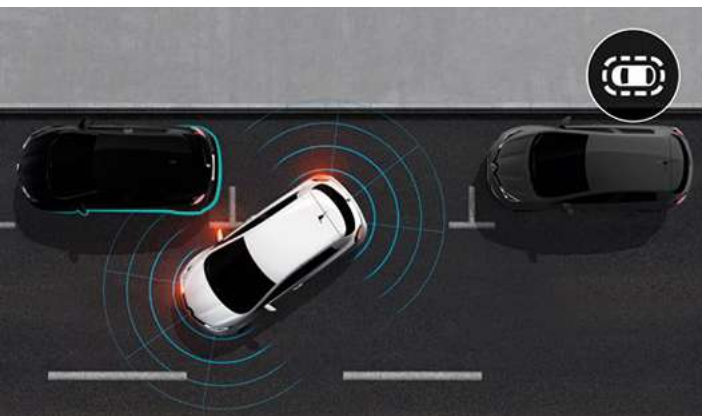
**Final mile guidance<sup>(1)</sup>.** Park up and transfer the route from your Zoe Van E-Tech electric to your smartphone and easily continue on foot to your final destination.

**Check** the battery **charging status** and remaining driving range in real time.

**Start** or **schedule** to charge your Zoe Van E-Tech electric at off-peak times to save on electricity costs.

**Activate** or **program the air conditioning** or **heating** in advance of your journey and enjoy Zoe Van E-Tech electric at the perfect temperature when you get in.

(1) Available only on models equipped with EASY LINK navigation.



## Driving made simple

Enjoy the many driving assistance systems<sup>(1)</sup> available as you move up the range on Zoe Van E-Tech electric, including automatic emergency braking (AEBS) as standard. Easy parking every time, thanks to the Front and Rear Parking Sensors<sup>(2)</sup>. Lane Departure Warning systems with Lane Keep Assist warns you when you leave your lane and corrects your trajectory in the event you unexpectedly depart from your lane. Zoe Van E-Tech electric makes your life easier with an ever more technologically advanced driving experience.

(1) It is your responsibility to stay alert, drive safely and be in control of the vehicle at all times. Driver assist features have speed and other limitations and should not be relied on. For more information, please refer to the owner's manual or contact your local dealer. (2) Rear Parking Sensors are standard on Business+, Front and Rear Parking Sensors are available as options in the Safety pack on Business+





# Colours



	Glacier White (369)	Highland Grey (KQA)	Titanium Grey (KPN)	Celadon Blue (RQT)	Flame Red (NNP)	Aconite (LNJ)	Diamond Black (GNE)	Midnight Blue (RRE)
Business	FOC	○	○	○	○	○	○	○
Business+	FOC	○	○	○	○	○	○	○

FOC = free of charge ○= Optional (1) Non metallic paint (2) Metallic paint (3) Renault i.d. metallic paint

Every effort has been made to ensure that the information, descriptions, and images were correct at the time of publication however images may not always reflect the exact version selected. It should be noted that limitations on screen do not permit the subtle paintwork shades on this page to be shown with absolute accuracy.



# Standard features

## BUSINESS



15" flex wheels



Business upholstery



### Exterior design

- Full LED headlights with C-shape DRL
- 15" flex wheels
- Rear disc brakes
- Body-coloured door handles
- Black grain-effect door mirrors

### Interior design

- Black Business seat upholstery

### Driving and controls

- Auto Emergency Braking System (AEBS)
- Hands-free key card with push button stop/start function
- Automatic head lights and rain sensitive front wipers
- Cruise control/speed limiter
- Customisable 10" driver's display
- R110 motor (80kW/107hp)

### Comfort and convenience

- Climate control
- Driver and passenger front electric windows
- Heated electrically adjustable door mirrors

### Communication and on-board technology

- EASY LINK radio with 7" touch screen and 2 speakers
- Smart phone replication with Android Auto™ and Apple CarPlay™<sup>(2)</sup>
- Alarm

### E-Tech electric specific equipment

- E-Tech electric 50 battery
- Eco-meter
- E.V. voice, pedestrian warning
- E-shifter gear selector with B mode
- E.V. Services<sup>(1)</sup> via MY Renault App: battery charging status, charge scheduling and pre-conditioning
- Chameleon Charger™ for charging between 3kW to 22kW
- Type 2 charging cable

### Load area

- Mesh bulkhead
- 4 additional anchorage points
- Load area compartment
- Load area compartment cover
- Load area protective rubber flooring
- Disabled rear-lateral opaque windows

(1) 3 years subscription to E.V. Services on all models after which time they will need to be renewed. E.V. Services are compatible with Apple iOS® and Android® devices.

(2) Check your phones compatibility at point of purchase with your dealer.

# Standard features

---

## **BUSINESS+** (in addition to Business)



16" alloy wheels



Business+ upholstery



### **Exterior design**

- 16" alloy wheels
- Front fog lights
- Body-coloured door mirrors

### **Interior design**

- Business+ recycled fabric seat upholstery
- Synthetic leather steering wheel
- Auto dim rear view mirror

### **Driving and controls**

- Rear parking sensors
- Lane Departure Warning
- Lane Keep Assist
- Automatic high-beam
- Over Speed Protection

### **Communication and on-board technology**

- EASY LINK radio and navigation with 7" touch screen and 6 speakers
- Connected navigation services - 3 years included: Google search for places of interest, live traffic info, weather, location of charging stations



# Wheels & Tyres



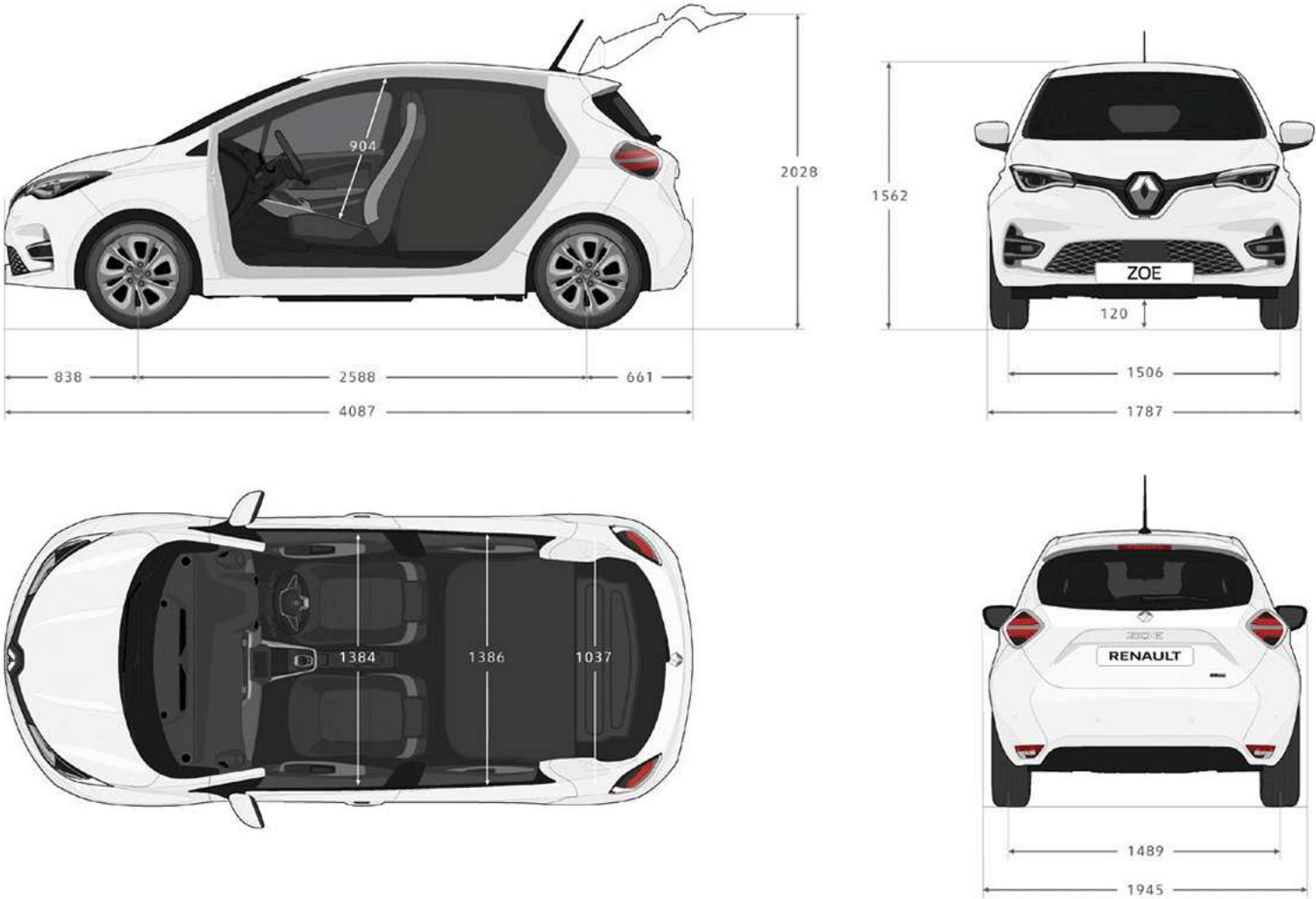
15" steel wheels  
Standard on Business



16" alloy wheels  
Standard on Business+

TYPE OF TYRES		Summer tyres	
Tyre/wheel size	185/65 R16 92 T	195/55 R16 91 T	195/55 R16 91 H
Make	Michelin Primary 4 E	Michelin Primary 4 E	Continental ContiEcoContact 5
Fuel efficiency class	A	A	C
Wet grip class	B	B	B
Exterior noise (dB)	70	70	72

# Dimensions (mm)



**DIMENSIONS (mm)**

Load Area Volume	1m³
<b>Exterior Dimensions</b>	
Overall length	4,087
Overall width without/with door mirrors	1,787/1,945
Unladen height	1,562
Wheelbase	2,588
Front overhang	838
Rear overhang	661

**Interior Dimensions**

Load length	1,220
Load width at front	1,120
Load width at rear	1,000
Load height at rear	770
Load height at bulkhead	880
Rear height in middle cabin	1,100
Rear width aperture	960



# Technical Specification

<b>R110</b>	
Battery type	E.V. 50
Number of seats	2
<b>DRIVING RANGE &amp; CONSUMPTION</b>	
Certified WLTP (miles) <sup>(1)</sup> combined cycle driving range	BUSINESS 245/BUSINESS+ 239
Certified combined cycle consumption (Wh/km)	BUSINESS 173/BUSINESS+ 178
Wheel size of the certified version <sup>(2)</sup>	BUSINESS 15"/BUSINESS+ 16"
<b>ENGINE</b>	
Electric engine technology	Synchronous with wound rotor
Max. power output EEC kW (hp) / at peak power rating (rpm)	80 (108) / 3.395 to 10.886
Max. torque Nm EEC (Nm) / at peak power rating (rpm)	225 / 500 to 3.395
<b>BATTERY</b>	
Usable capacity (kWh)	52
Technology	Lithium-ion
Total voltage (volts)	400
Number of modules / cells	12/192
Battery weight (kg)	326
<b>CHARGING TIME<sup>(3)</sup></b>	
Charger	Adjustable single and three-phase, 2 kW to 22 kW
2.3 kW home outlet (single-phase 10A) (0-100%)	34h30
Green-up socket / 3.7 kW Wallbox (single-phase 16A) (0-100%)	16h10
7.4 kW Wallbox (single-phase 32 A) (0-100%)	9h25
11 kW station (three-phase 16A) (0-100%)	6h
22 kW station (three-phase 32 A) (0-100%)	3h
DC 50 kW quick charge (0-80%)	1h10
<b>GEARBOX</b>	
Gearbox type	Gearbox with a single gear ratio speed reducer
Number of forward gears	1
<b>PERFORMANCE</b>	
Top speed (mph)	84
0-30 mph – 0-60 mph – 50-75mph (s)	3.9 - 11.4 - 9.3
SCx (aerodynamics)	0.75
<b>STEERING</b>	
Power	Yes (electric)
Turning circle between kerbs (m)	10.56
Number of steering-wheel turns	2.73
<b>WHEELS AND TYRES</b>	
Standard wheel rims (")	15" (BUSINESS) ; 16" (BUSINESS+)
Tyre dimensions 15" - Michelin Primacy 4	185/65 R15 92T
Tyre dimensions 16" - Michelin Primacy 4	195/55 R16 91T
<b>BRAKING</b>	
Front: plain disc (PD), ventilated disc (VD) diam. (mm)	Ventilated discs 280
Rear: drum (D), plain disc (PD), ventilated disc (VD) diam. (mm)	Ventilated discs 260
<b>WEIGHT (kg)</b>	
Unladen kerb weight (Business/Business+)	1,531 / 1,553
Gross vehicle weight rating (GVWR)	1,988
Within the maximum permissible GVWR on front/rear	1,048
Payload (PL) (Business/Business+)	457 / 435
Max. braked/unbraked trailer weight	Not permitted
<b>SERVICE INTERVALS</b>	
Service Intervals	12 months or 18,000 miles - whichever is sooner

(1) Business R110 245 miles and Business+ R110 239 miles. WLTP figures shown are for comparability purposes. Figures obtained after the battery was fully charged. Actual real-world driving results may vary depending on factors such as the starting charge of the battery, accessories fitted after registration, weather conditions, driving styles and vehicle load. Renault estimates average real-world driving figures for this vehicle as 233 miles in summer and 150 miles in winter, depending on the factors above. (2) The size of the wheel rims can impact the vehicle's driving range. (3) Charging time and recovered driving range depend on temperature, battery wear, the power delivered by the station and your charge level.

# Zoe Van E-Tech electric pricing

## FULL PURCHASE (ZOE VAN) PRICING

VERSIONS	CO <sub>2</sub> (g/km)	Power unit output kW (bhp)	Max. payload (kg) <sup>†</sup>	Basic price (£)	VAT 20% (£)	Total retail (£)**	Government grant (£)	Basic price after PiVG* exc VAT	Total retail price after PiVG**	On the road price after PiVG***
Business R110 E-Tech 50	0	80 (107)	457	tbc	tbc	tbc	tbc	tbc	tbc	tbc
Business R110 E-Tech 50 Rapid Charge	0	80 (107)	450	tbc	tbc	tbc	tbc	tbc	tbc	tbc
Business+ R110 E-Tech 50 Rapid Charge	0	80 (107)	427	tbc	tbc	tbc	tbc	tbc	tbc	tbc

\* PiVG - Plug-In Van Grant. \*\* All prices shown are the manufacturer's recommended retail prices. i - Indicates with full battery purchase. \*\*\*For full terms and conditions visit <https://www.cdn.renault.com/content/dam/Renault/UK/brand-and-editorial/After-sales/ZE-warranty-2018.pdf> The "On The Road" price includes delivery to the dealer premises, 35% PiVG (up to a maximum of £2,500 for small vans weighing less than 2.5 tonnes), number plates, 12 months government road fund licence at £265 (or £0 for KANGOO E-Tech electric and Zoe Van E-Tech electric) and First Registration Fee at £55. Other goods or services supplied by agreement between the customer and the Dealer are not included. † Payload equals the Maximum Operating Mass (Gross Vehicle Mass or GVW) less the Kerb Mass. Kerb Mass is the weight of the complete vehicle including coolant, oil, the battery, spare wheel and jack, but excluding driver and crew. All Kerb Masses, and therefore Payloads quoted are subject to a 3% manufacturing tolerance and are based on the base level model. Any additional equipment added (options or accessories), or the selection of a higher trim level, could result in a higher Kerb Mass and a reduced Payload, and may increase weight and decrease range figures.

## LCV SERVICE PLAN

## MRRP (inc VAT)

3 Years / 30,000 miles

£299

**Service Plan Terms & Conditions** The Service Plan offer is available on all LCV's. Valid at participating Renault dealers only and may be purchased up to 12 months after registration or before the first service (whichever is sooner). Vehicles must be ordered between 01 April 2022 to 30 June 2022 and registered to 30 September 2022.

The Renault Service plan covers the manufacturer's minimum maintenance programme requirements for the term of the Service Plan purchased (refer to the Warranty and Service sheet in the Handover Document wallet for details). The plan ends when you reach the age or mileage limit (whichever comes first). Services must be carried out in line with the manufacturer's minimum maintenance programme requirements and servicing intervals within +/- 1 month or 1,000 miles of the service interval and can only be carried out at a Renault Approved outlet. Service plans do not cover wear and tear items such as (but not limited to) tyres, wiper blades or brakes. For Service plan full Terms & Conditions visit [www.renault.co.uk/owners](http://www.renault.co.uk/owners). Cannot be part exchanged, refunded or transferred. All prices quoted are MRRP.

OPTIONS	Business	Business+	Basic price (£)	VAT 20% (£)	MRRP <sup>^</sup>
<b>TECHNOLOGY</b>					
Parking pack (Front and rear sensors with reverse camera)	-	○	tbc	tbc	tbc
9.3" EASY LINK screen	-	○	tbc	tbc	tbc
Rear parking sensors	○	●	tbc	tbc	tbc
<b>INTERIOR</b>					
Winter pack (heated seats & steering wheel)	-	○	tbc	tbc	tbc
<b>EXTERIOR</b>					
Metallic paint	○	○	tbc	tbc	tbc
Metallic Renault i.d. paint	○	○	tbc	tbc	tbc

● = Standard (therefore no cost); ○ = Optional; - = Not available; FOC = Free of charge option. <sup>^</sup>Manufacturer's Recommended Retail Price

ACCESSORIES (PRICES INCLUDE FITMENT)	Basic price (£)	VAT 20% (£)	MRRP <sup>^</sup>
<b>EXTERIOR</b>			
Shark antenna <sup>‡</sup>	166.67	33.33	£200.00
Illuminated door sills	136.67	27.33	£164.00
Boot sill protector	66.67	13.33	£80.00
Rear parking sensors	236.67	47.33	£284.00
Front parking sensors	185.00	37.00	£222.00
Parking sensor pack - Front and rear parking sensors	415.00	83.00	£498.00
<b>INTERIOR</b>			
Arm-rest <sup>‡</sup> (available in black & recytex fabric)	131.67 / 147.50	26.33 / 29.50	£158.00 / £177.00
Kenwood dashcam	225.83	45.17	£271.00
Domestic charging cable	383.33	76.67	£460.00
Cable strap	30.83	6.17	£37.00

<sup>^</sup>Manufacturer's Recommended Retail Price <sup>‡</sup>Prices shown only valid for vehicles which will have the accessories fitted post-registration at the manufacturer's import centre. Your local dealer will be able to offer further advice and supply a dealer fitted price for vehicles already in dealer stock. Accessories are fitted post-production and may have an impact on real world fuel (actual) consumption and CO<sub>2</sub> figures.



# Equipment and options

	BUSINESS	BUSINESS+
<b>SAFETY</b>		
2 Driver airbags + 2 Passenger airbags	•	•
Hill Start Assist	•	•
Anti-lock Braking System (ABS) with Emergency Brake Assist (EBA)	•	•
Electronic stability programme (ESP) with anti-slip regulation (ASR) and understeer control logic (UCL)	•	•
Front fog lamps	-	•
Automatic headlights and wipers	•	•
Automatic activation of hazard lights upon emergency braking	•	•
R.A.I.D. (Renault Anti Intruder Device) automatic door locking	•	•
ISOFIX fittings on front passenger seat	•	•
Tyre inflation and repair kit	•	•
Tyre pressure monitoring system	•	•
E.V. Voice (low speed pedestrian warning)	•	•
<b>DRIVING AND DRIVING ASSISTANCE</b>		
Cruise control/speed limiter, with steering wheel controls	•	•
Customisable 10" colour driver's display	•	•
Rear parking sensors	○	•
Rear-view camera	-	○
Front and rear parking sensors	-	○
Auto Emergency Braking System	•	•
Lane Departure Warning and Lane Keep Assist	-	•
Automatic high-beam/dipped-beam headlight activation	-	•
Over Speed Protection	-	•
<b>COMFORT</b>		
Automatic climate control with eco function	•	•
Auto dim rear view mirror	-	•
Front electric windows on driver and passenger side	•	•
Renault hands-free card	•	•
Heated, electrically adjustable door mirrors	•	•
Heated front driver and passenger seats and heated leather steering wheel	-	○
<b>STORAGE</b>		
Height and reach adjustable steering wheel	•	•
Glovebox with slow-opening flap	•	•
1.5L bottle holders in front doors	•	•
<b>TECHNOLOGY</b>		
Easy Link 7" - Radio with 7" high resolution touch screen - Compatible with Android Auto™ and Apple CarPlay™ - Bluetooth®, 2 USB, 1 AUX port	•	-
Easy Link 7" with Navigation - Radio and navigation with 7" touch screen, compatible with Android Auto™ and Apple CarPlay™ - 6 speakers, Bluetooth®, 2 USB, 1 AUX port, Connected navigation services, Auto-Update Service	-	•
Easy Link 9.3" with Navigation - Radio and Navigation with 9.3" high resolution touch screen - Compatible with Android Auto™ and Apple CarPlay™ - 6 speakers, Bluetooth®, 2 USB, 1 AUX port - Connected navigation services - Auto-Update Service	-	○
12V outlet under the dashboard	•	•
<b>RENAULT EASY CONNECT - CONNECTED SERVICES</b>		
4G connected vehicle with data pack included for 3 years	•	•
Connected navigation services - 3 years included: Google search for places of interest, live traffic info, weather (depending on the country)	-	•
Connected services on the MY Renault app: battery charging status, passenger compartment preconditioning	•	•
Auto-Update service - 3 years included (for compatible Easy Link systems): automatic wireless updating of the multimedia system, for automatic system improvements. For Easy Link systems with navigation: map also updated automatically	-	•

	BUSINESS	BUSINESS+
<b>E-TECH ELECTRIC SPECIFIC EQUIPMENT</b>		
ECO Mode	●	●
Odometer, eco-meter and battery gauges integrated into the instrument panel	●	●
Scheduled charging and heating or air conditioning using the EASY LINK multimedia system	●	●
Chameleon Charger™	●	●
50kW DC rapid charger	○	○
Type 2 charging cable	●	●
<b>EXTERIOR DESIGN</b>		
Full LED headlights with C-shape DRL	●	●
15" flex wheels with 15" Michelin Primacy 4-E tyres	●	-
16" alloy wheel with 16" Michelin Primacy 4-E tyres	-	●
Rear disc brakes	●	●
Metallic paint	○	○
Body-coloured door handles	●	●
Black door mirrors with grain-effect	●	-
Body-coloured door mirrors	-	●
<b>INTERIOR DESIGN</b>		
Leather gear lever	●	●
BUSINESS black fabric seat upholstery	●	-
BUSINESS+ recycled fabric seat upholstery	-	●
Synthetic leather steering wheel	-	●

● : Standard. ○ : Option. - : Not available.



# Accessories



### 1. Cable Strap

Being able to recharge anywhere of course means having your cables available at all time. The strap is designed to help keep your cables neat and at easy reach.

### 2. Shark Antenna

Add a sporty touch with the Shark Antenna, perfectly integrated in to the roof of your Zoe Van E-Tech electric. Compatible with digital audio broadcasts (DAB).

### 3. Domestic Charging Cable

For use in the absence of a Wall-Box or Public Charging Point, Zoe Van E-Tech electric can be charged using the domestic charging cable from a 3 pin domestic plug. Length: 6.5m & Maximum Current: 10A.

### 4. Boot sill protector

Cover and protect your vehicle's rear bumper with a practical, tailor-made accessory.

### 5. Bodywork Protection Film\*

Take complete care of your Zoe Van E-Tech electric. Protects against scratches to keep your vehicle looking as good as new. Available in a Full Protection Film Pack or in smaller packs to cover separate sections of the vehicle.

\* Modification might be required due to the placement of the parking sensors.

For more information, consult the New Zoe Van accessories brochure.

Some accessories require the vehicle to be registered before fitment. Your selected dealer will be able to offer further advice on this and provide you with a quote for fitment for vehicles already in dealer stock. Accessories are fitted post production and may have an impact on WLTP fuel (actual) consumption and CO<sub>2</sub> figures.





# Further information

Vehicle	Classed As	WLTP CO <sub>2</sub> (g/km) Level	Delivery to Dealer and Number Plates*	Vehicle Excise Duty	First Registration Fee	Total
Zoe Van E-Tech electric	LCV	-	£645	£0	£55	£700

Information correct at time of publication. \* Inc VAT † WLTP figures shown are for comparability purposes; only compare figures with vehicles tested to the same technical procedures. Actual real world driving results may vary depending on factors such as weather conditions, driving styles, vehicle load or any accessories fitted after registration. WLTP is a new test used for fuel consumption and CO<sub>2</sub> figures. Please visit [renault.co.uk/configure](https://www.renault.co.uk/configure) for WLTP figures for any selected options.

## Renault PRO+, the specialist brand



You're the expert in your field and at Renault PRO+ we're here to guide you through ours. We're passionate about delivering products and services to move your business forward. So when you choose to partner with Renault PRO+ you can expect:

### Specialist network

Renault PRO+ Centres have a dedicated commercial vehicle specialist. So whatever you're seeking advice on, there's always someone to help.

### Business Commitment

Come rain or shine, we have a set of commitments in place to help maximise uptime and minimise downtime.

### The future today - 100% electric

Renault PRO+ has been building, selling and maintaining electric vans since 2011. So when you're looking to make the switch, you know who to speak to.

### A tailored approach

Your vehicles are as unique as your business. That's why we have a programme of conversions to deliver exactly the product you want. From 'off the shelf' conversions to a more bespoke approach. We'll guide you through.

# Renault Services

## 5 Years Warranty

Your Zoe Van E-Tech electric is covered by a warranty package for up to 5 years<sup>o</sup> from date of first registration with unlimited mileage during the first 24 months, then limited to a total of 100,000 miles or 5 years, whichever comes first. Your Renault Dealer is able to repair or replace without charge, parts that are found to have a material or assembly defect that is recognised by Renault. The traction battery warranty runs for 8 years<sup>y</sup> or 100,000 miles, whichever comes first. The paintwork warranty runs for 3 years and the anti-corrosion warranty for 12 years<sup>o</sup>.

## 3 Years Roadside Assistance

Should you need it, we'll provide emergency roadside repairs or tow you to the nearest Renault Dealer. This service is available 24 hours a day and is provided for 36 months from the date of first registration (unlimited mileage for first 24 months, then limited to a total of 100,000 miles or 3 years, whichever comes first). Assistance is provided within the UK & Northern Ireland only at roadside, home and includes national recovery and onward travel. Renault Assistance applies to mechanical or electrical defects which are covered by warranty.

For Renault Assistance Terms and Conditions please visit [www.renault.co.uk/assistance](http://www.renault.co.uk/assistance).

## LCV Service Plans & Extended Warranties

Renault's LCV Service Plans are the ultimate package to provide care free servicing for your new Renault LCV.

It really is the hassle free way to take care of your Renault and benefits from;

- Inflation Proof Servicing - You know exactly what you'll pay and there are no hidden costs
- Peace of Mind - No matter where life takes you, we'll be there in over 5000 workshops across Europe
- Renault Expertise & Quality - Our highly trained technicians know your Renault inside out

The Renault LCV Service Plan contains Renault services in-line with the manufacturer's service schedule, plus comes with a complimentary vehicle safety check to ensure your Renault is in the best condition possible.

Renault LCV Extended Warranty enhancements also available. Refer to the Price Guide for more details.

## Finance options\*

There are a wide variety of ways in which the purchase of a new vehicle can be financed. Renault Finance offers all of them, so whether you're a fleet buyer or private buyer, Renault Finance is ideally placed to tell you which plan or combination of plans best suits your needs and circumstances.

## Renault car insurance<sup>1</sup>

A car as well designed as your Renault deserves an insurance policy to match. Renault Insurance has been specifically created to provide superb protection for you and your car. Unlike most other UK insurers, in the event of an accident, Renault Insurance will have your Renault repaired at a Renault Approved Bodyshop using only Renault approved parts and approved repair methods. This maintains your Renault's safety rating, protects its resale value and preserves its Renault warranty<sup>2</sup>. Renault Insurance also offers a courtesy car for the duration of a repair at a Renault Approved Bodyshop.

Renault car insurance: **0330 102 7794<sup>1</sup>**  
[www.renaultcarinsurance.co.uk](http://www.renaultcarinsurance.co.uk)

Lines are open Mon - Thurs 8.30am - 7pm, Fri 9am - 6pm, Sat 9am - 5pm

## Renault iCare

Is an innovative Service, Maintenance & Repair product that supplies Business customers with a fully supported, managed hassle free service and maintenance package.

Renault iCare is a "Pay-As-You-Go" product that insures your vehicle is maintained by Renault technical experts when work is required.

iCare provides the following benefits:

- Full Service, Maintenance & Repair cover in the Renault Dealer Network
- Tyres can be included within the contract at an additional fixed cost
- Ancillary equipment can also be included (at an additional fixed monthly cost)
- Excludes: Damage/Neglect/Abuse/Glass & Bulbs
- A fixed, pre-agreed pence per mile rate
- No excess mileage charges at the end of the contract

- No pooled mileage administration
- Minimalise downtime

For more information and to obtain a quote based on your requirements, please speak to your local Renault Business dealer or visit [www.renault.co.uk/care](http://www.renault.co.uk/care).

## Customer Relations

Renault knows the value of communicating with its customers and we have established effective ways to keep in touch with you. If after speaking to your local Renault dealership you are not completely satisfied, please contact the Renault UK Customer Relations Team on 0344 3350000<sup>1</sup> (Mon-Fri 8.00am to 6.00pm, Closed on Bank Holidays. Live Chat Mon-Fri 8.00am to 9.00pm). You can also visit our website [www.renault.co.uk](http://www.renault.co.uk) or write to us at: Renault UK Ltd, The Rivers Office Park, Denham Way, Maple Cross, Rickmansworth, Hertfordshire, WD3 9YS.



<sup>o</sup>5-year warranty valid on Zoe Van E-Tech electric. Exclusions and limitations apply. For Warranty Terms and Conditions please visit [www.renault.co.uk/warranty](http://www.renault.co.uk/warranty). For servicing plan terms and conditions visit [www.renault.co.uk/serviceplan](http://www.renault.co.uk/serviceplan) \*Finance provided by Renault Finance, P.O. Box 149, Watford, WD17 1FJ. Guarantees and indemnities may be required. You must be at least 18 and a UK resident (excludes Isle of Man and Channel Islands) to apply. Subject to status, terms and conditions apply. <sup>1</sup>Calls to 0330 numbers are free if used as part of your inclusive mobile minutes and are charged at local rates from landlines. <sup>2</sup>If your insurer uses non-approved parts which subsequently fail, they may not be covered under your manufacturer's warranty. <sup>3</sup>For full warranty terms and conditions please visit [www.renault.co.uk/warranty](http://www.renault.co.uk/warranty). <sup>4</sup>Renault Insurance is arranged and administered by Verex Insurance Services Ltd, which is registered in England and Wales No. 05686831 at Batchworth House, Church Street, Rickmansworth, Herts, WD3 1JE and authorised and regulated by the Financial Conduct Authority, No. 487185. Verex Insurance Services Ltd arranges policies from a panel of insurers, details are available on request.



Continue the Renault Zoe Van experience  
at **[www.renault.co.uk](http://www.renault.co.uk)**

Although every effort has been made to ensure that the information contained within this brochure is as accurate and up to date as possible, Renault U.K. reserves the right to modify its models without notice, including their characteristics, specifications, equipment and accessories. Brochures inevitably become out of date or inaccurate in some respects, in that such characteristics, specifications equipment, or accessories may be changed after the publication date given below and can differ from the descriptions given or the photos displayed. It is therefore necessary to check with your Renault Dealer before purchasing any product that the characteristics, specifications, equipment or accessories of the vehicle on order are as advertised.